

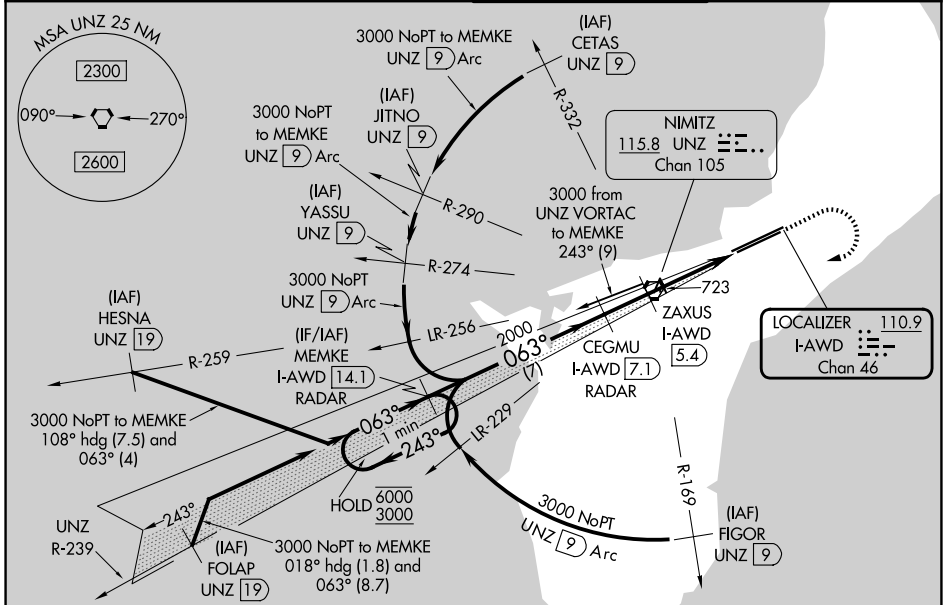
LOC/DME I-AWD 110.9 Chan 46	APP CRS 063°	Rwy Ldg 10014 TDZE 258 Apt Elev 305
---	------------------------	--

ILS or LOC RWY 6R

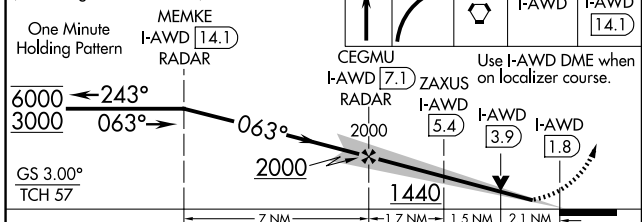
GUAM INTL (GUM)(PGUM)

DME or RADAR required.	MALSR 	MISSED APPROACH: Climb to 2100 then climbing right turn to 3000 direct UNZ VORTAC and on I-AWD to MEMKE/I-AWD 14.1 DME/RADAR and hold.
<p>▼ Rwy 6R helicopter visibility reduction below 3/4 SM NA. Circling NA southeast of Rwy 6R-24L. Inop table does not apply to S-LOC 6R Cat C and D. ZAXUS fix minimums (DME required): For inop ALS, increase S-LOC 6R Cat A and B visibility to 1 SM and Cats C and D to 2 SM.</p>		

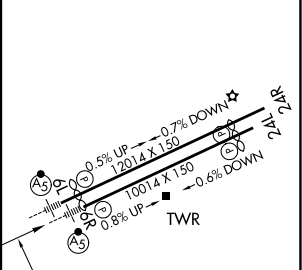
ATIS 119.0	GUAM CERAP 119.8 269.0	AGANA TOWER 118.1 340.2	GND CON 121.9 336.4
----------------------	----------------------------------	-----------------------------------	-------------------------------



VGSI and ILS glidepath not coincident (VGSI Angle 3.00/TCH 76).



ELEV 305	D TDZE 258
----------	-------------------



CATEGORY	A	B	C	D
S-ILS 6R		603-3/4	345 (300-3/4)	
S-LOC 6R	1440-3/4 1182 (1200-3/4)	1440-1 1182 (1200-1)	1440-3	1182 (1200-3)
CIRCLING	1440-1 1/4 1135 (1200-1 1/4)	1440-1 1/2 1135 (1200-1 1/2)	1440-3 1135 (1200-3)	NA
ZAXUS FIX MINIMUMS (DME REQUIRED)				
S-LOC 6R	980-3/4	722 (700-3/4)	980-1 5/8	722 (700-1 5/8)
CIRCLING	980-1	675 (700-1)	980-2	675 (700-2)

HIRL all Rwys					
FAF to MAP 5.3 NM					
Knots	60	90	120	150	180
Min:Sec	5:18	3:32	2:39	2:07	1:46