

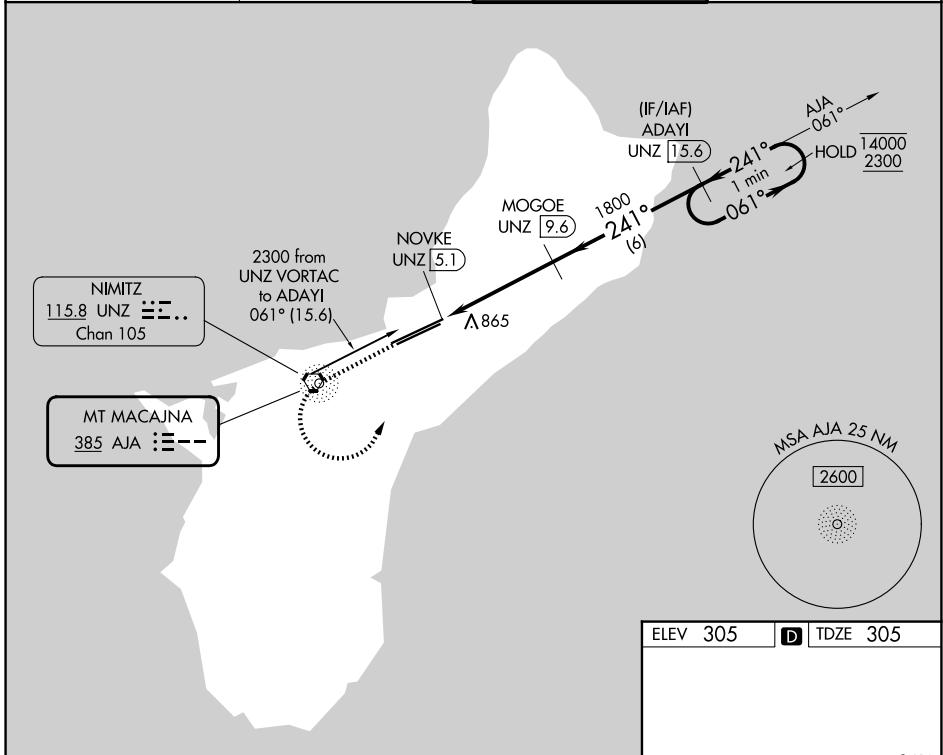
NDB AJA 385	APP CRS 241°	Rwy Ldg 12014 TDZE 305 Apt Elev 305
-----------------------	------------------------	--

NDB RWY 24R

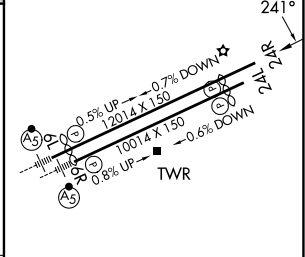
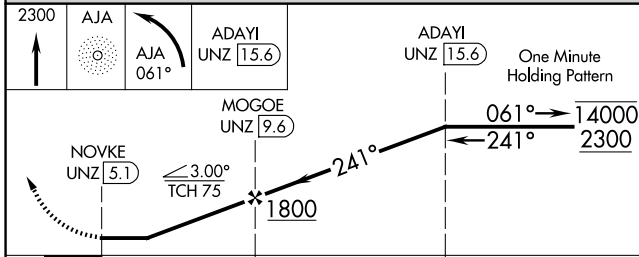
GUAM INTL (GUM)(PGUM)

DME required.		MISSED APPROACH: Climb to 2300 direct AJA NDB and left turn on AJA NDB bearing 061° to ADAYI/UNZ 15.6 DME and hold.
▼ ▲NA	Circling NA southeast of Rwy 6R-24L. Rwy 24R helicopter visibility reduction below 3/4 SM NA. Simultaneous reception of AJA NDB and UNZ DME required.	

ATIS 119.0	GUAM CERAP 119.8 269.0	AGANA TOWER 118.1 340.2	GND CON 121.9 336.4
----------------------	----------------------------------	-----------------------------------	-------------------------------



ELEV 305	D TDZE 305
----------	------------



CATEGORY	A	B	C	D
S-24R	1220-1¼ 915 (1000-1¼)		1220-2½ 915 (1000-2½)	
CIRCLING	1220-1¼ 915 (1000-1¼)		1220-2¾ 915 (1000-2¾)	NA

HIRL all Rwys

PAC, 14 MAY 2026 to 09 JUL 2026

PAC, 14 MAY 2026 to 09 JUL 2026