

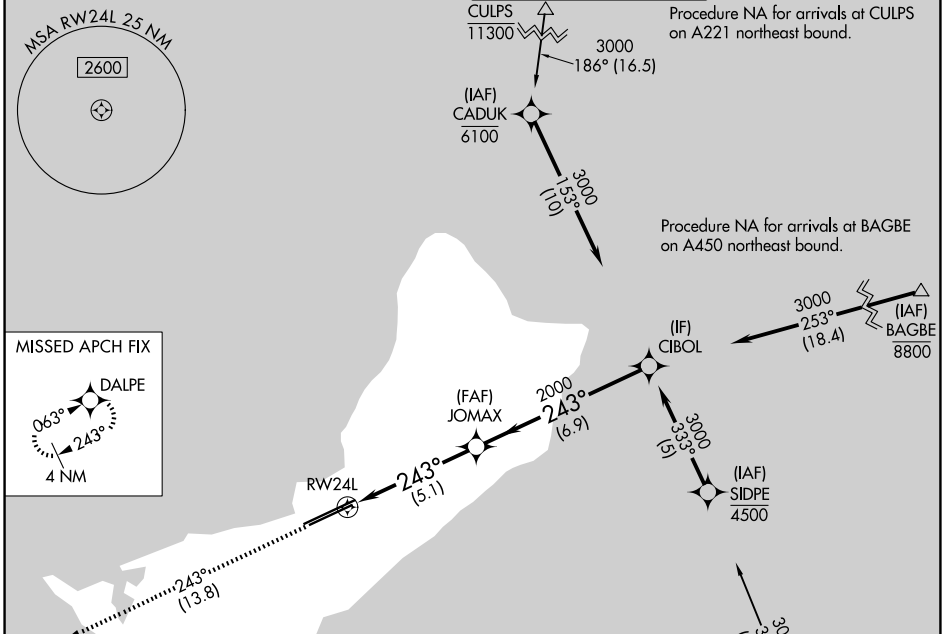
# RNAV (RNP) Z RWY 24L

GUAM INTL (GUM)(PGUM)

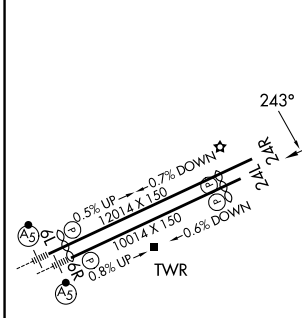
APP CRS <b>243°</b>	Rwy Ldg <b>8710</b>
	TDZE <b>293</b>
	Apt Elev <b>305</b>

RNP AR APCH - GPS.	MISSED APPROACH: Climb to 3000 on track 243° to DALPE and hold.
<p>▼ For uncompensated Baro-VNAV systems, procedure NA</p> <p>▲ NA below 19°C or above 48°C.</p>	

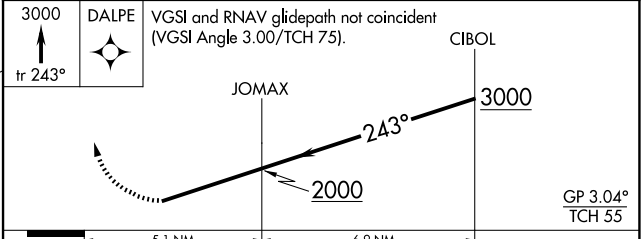
ATIS <b>119.0</b>	GUAM CERAP <b>119.8 269.0</b>	AGANA TOWER <b>118.1 340.2</b>	GND CON <b>121.9 336.4</b>
----------------------	----------------------------------	-----------------------------------	-------------------------------



ELEV 305	<b>D</b>	TDZE 293
----------	----------	----------



3000	DALPE	VGSI and RNAV glidepath not coincident (VGSI Angle 3.00/TCH 75).	CIBOL
------	-------	--	-------



		5.1 NM	6.9 NM		
CATEGORY	A	B	C	D	
RNP 0.20 DA		1103-2½	810 (800-2½)		
RNP 0.30 DA		1140-2½	847 (900-2½)		

HIRL all Rwys **AUTHORIZATION REQUIRED**

PAC, 14 MAY 2026 to 09 JUL 2026

PAC, 14 MAY 2026 to 09 JUL 2026