

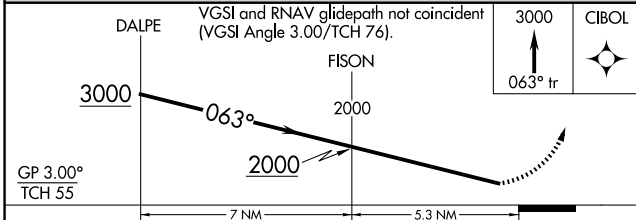
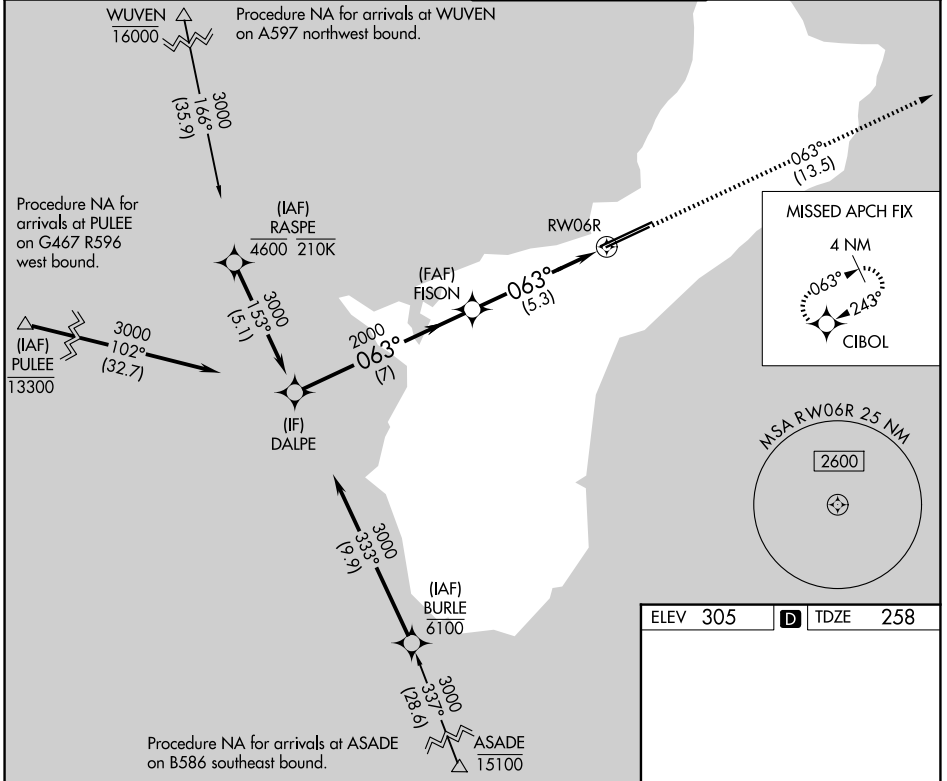
APP CRS	Rwy Ldg	10014
063°	TDZE	258
	Apt Elev	305

RNAV (RNP) Z RWY 6R

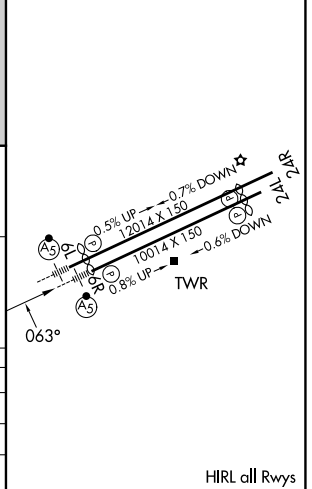
GUAM INTL (GUM)(PGUM)

RNP AR APCH - GPS.		MALSR	MISSED APPROACH: Climb to 3000 on 063° track to CIBOL and hold.
<p>▼ For uncompensated Baro-VNAV systems, procedure NA below 19°C or above 48°C. Rwy 6R helicopter visibility reduction below 3/4 SM NA. For inop ALS increase RNP 0.30 all Cats visibility to 1 1/2. Inop table does not apply to RNP 0.30*.</p>			*Missed approach requires minimum climb of 285 feet per NM to 1400.

ATIS 119.0	GUAM CERAP 119.8 269.0	AGANA TOWER 118.1 340.2	GND CON 121.9 336.4
----------------------	----------------------------------	-----------------------------------	-------------------------------



ELEV 305	D TDZE 258
----------	-------------------



CATEGORY	A	B	C	D
RNP 0.30 DA*		511-3/4	253 (300-3/4)	
RNP 0.30 DA		656-3/4	398 (400-3/4)	

AUTHORIZATION REQUIRED

HIRL all Rwy's