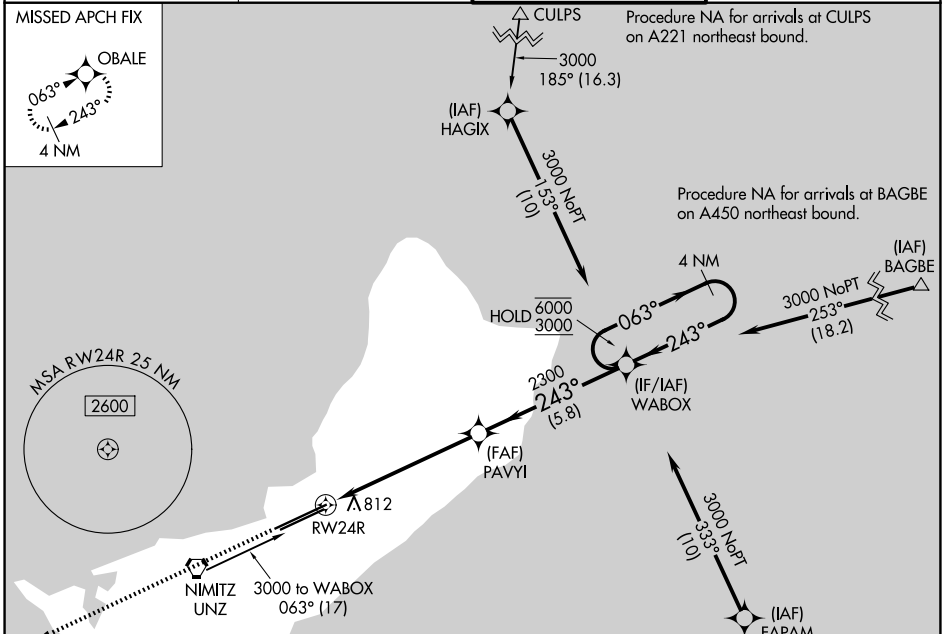


# RNAV (GPS) Y RWY 24R

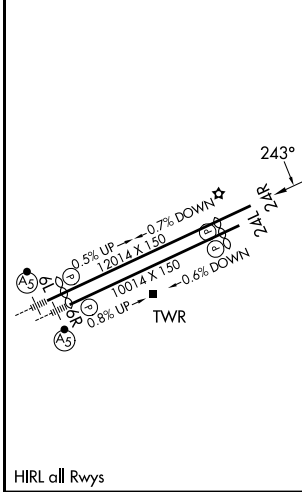
GUAM INTL (GUM)(PGUM)

APP CRS <b>243°</b>	Rwy Ldg <b>12014</b>
	TDZE <b>305</b>
	Apt Elev <b>305</b>

RNP APCH - GPS.		MISSED APPROACH: Climb to 3000 direct OBALE and hold.	
<p>▼ Circling NA southeast of Rwy 6R-24L.</p> <p>▲ Rwy 24R helicopter visibility reduction below ¾ SM NA.</p>			
ATIS <b>119.0</b>	GUAM CERAP <b>119.8 269.0</b>	AGANA TOWER <b>118.1 340.2</b>	GND CON <b>121.9 336.4</b>



ELEV 305	<b>D</b> TDZE 305
----------	-------------------



3000 OBALE		WABOX 4 NM Holding Pattern	
2.4 NM to RWY 24R		PAVYI	
RWY 24R		2300	
≤ 3.00° TCH 75		063° → 6000	
		← 243° 3000	
-2.4 NM		-3.6 NM	
		-5.8 NM	
CATEGORY	A	B	C
LNAV MDA	1160-1 855 (900-1)	1160-1¼ 855 (900-1¼)	1160-2½ 855 (900-2½)
CIRCLING	1160-1¼ 855 (900-1¼)	855 (900-1¼)	1160-2½ 855 (900-2½)
			NA