

HI-ILS Y or LOC Y RWY 06L

LOC I-AND 109.3	APCH CRS 064°	Rwy ldg 10,527
		TDZE 539
		Arprt Elev 617

[USAF]

ANDERSEN AFB (PGUA)

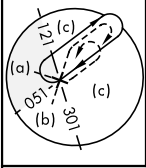
ATC RADAR monitoring required.

▼ * When ALS inop, increase CAT AB RVR to 55, vis to 1 mile; CAT CDE vis to 1 1/8 miles.
** Circling not authorized NW of Rwy 06L-24R.

SALS

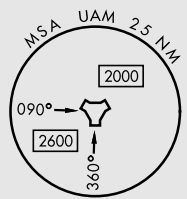
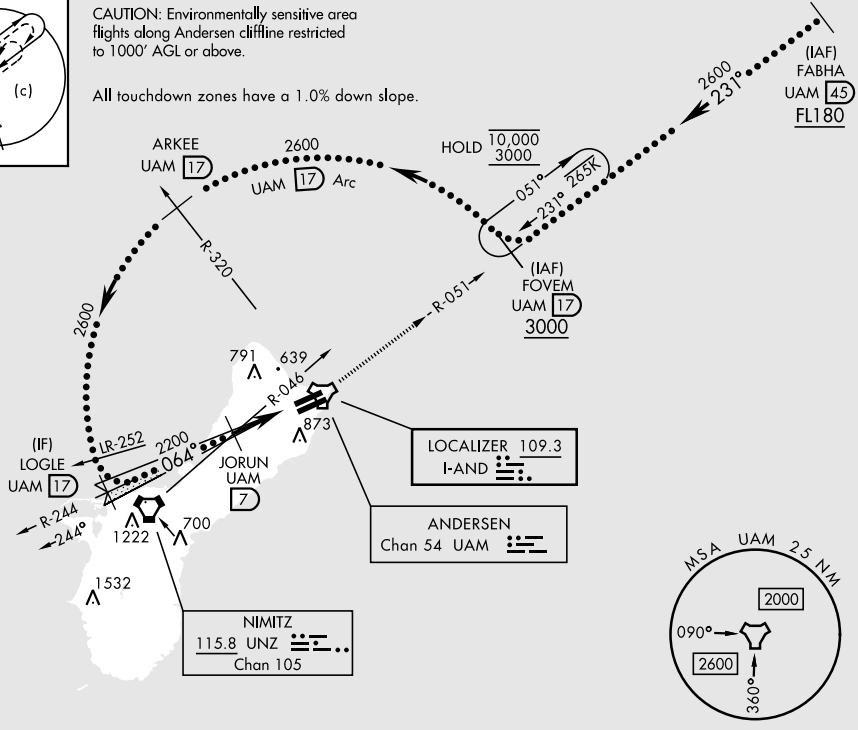

MISSED APPROACH: Climb to 3000, intercept UAM R-051 to FOVEM and hold.

ATIS 118.175 254.325	GUAM APP CON 119.8 269.0	TOWER 126.2 233.7	GND CON 121.7 275.8
--------------------------------	------------------------------------	-----------------------------	-------------------------------

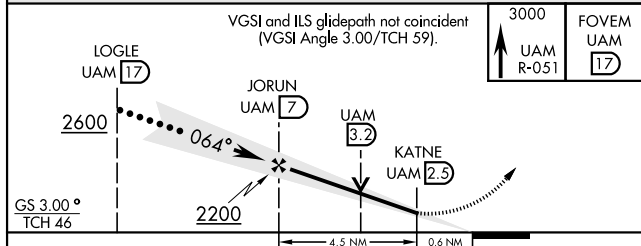


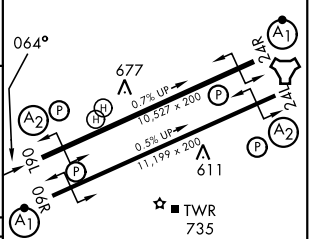
CAUTION: Environmentally sensitive area flights along Andersen cliffline restricted to 1000' AGL or above.

All touchdown zones have a 1.0% down slope.



EMERG SAFE ALT 100 NM 2900



ELEV	617	TDZE	539		
HIRL all rwys					
					
FAF to MAP 4.5 NM					
Knots	120	140	160	180	200
Min:Sec	2:15	1:56	1:41	1:30	1:21

CATEGORY	A	B	C	D	E
S-ILS 06L	739/40		200	(200-3/4)	
S-LOC 06L*	1020/40	481 (500-3/4)	1020/60	481 (500-1 1/8)	
CIRCLING**	1060-1	1080-1	1240-1 3/4	1240-2	1240-2 1/4
	443 (500-1)	463 (500-1)	623 (700-1 3/4)	623 (700-2)	623 (700-2 1/4)

HI-ILS Y or LOC Y RWY 06L

PAC, 14 MAY 2026 to 09 JUL 2026

PAC, 14 MAY 2026 to 09 JUL 2026