

YIGO, GUAM I, GUAM

ILS Z or LOC Z RWY 24R

LOC I-YIG 109.3	APCH CRS 244°	Rwy Idg 10,527 TDZE 617 Arprt Elev 617
---------------------------	-------------------------	--

[USAF]

ANDERSEN AFB (PGUA)

▼ * When ALS inop, increase RVR to 40, vis to ¼ mile.
 ** When ALS inop, increase RVR to 55, vis to 1 mile.
 *** Circling not authorized NW of Rwy 06L-24R.



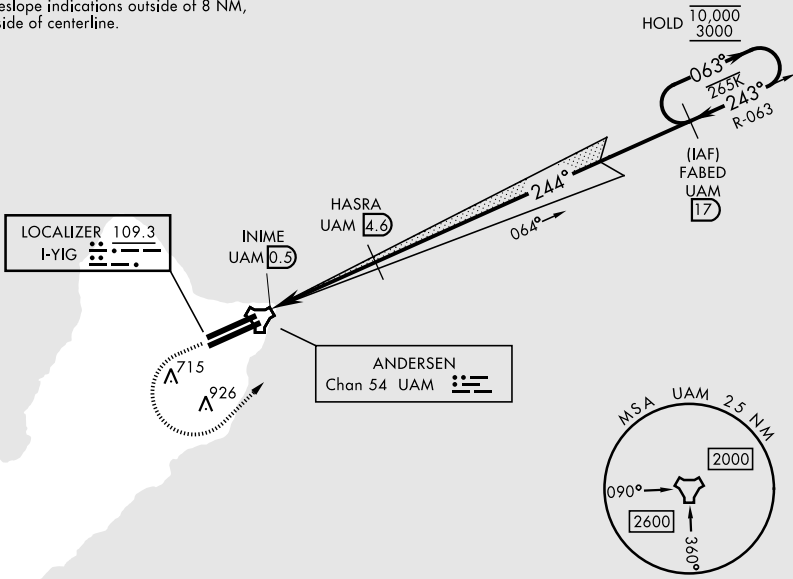
MISSED APPROACH: Climb to 1100, then climbing left turn to 3000 to intercept UAM R-063 direct FABED and hold.

ATIS 118.175 254.325	GUAM APP CON 119.8 269.0	TOWER 126.2 233.7	GND CON 121.7 275.8
--------------------------------	------------------------------------	-----------------------------	-------------------------------

CAUTION: Environmentally Sensitive Area
 Flights along Andersen cliffline restricted to 1000' AGL or above.

All touchdown zones have a 1.0% down slope.

Disregard all glideslope indications outside of 8 NM, beyond 5° either side of centerline.

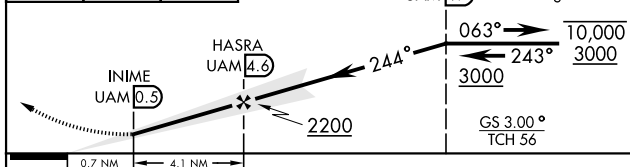
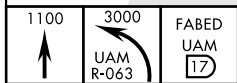


PAC, 14 MAY 2026 to 09 JUL 2026

PAC, 14 MAY 2026 to 09 JUL 2026

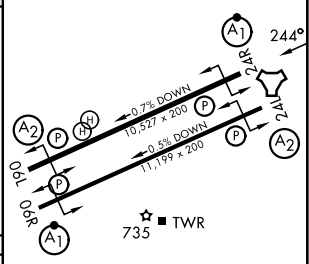
A 1190

EMERG SAFE ALT 100 NM 2900



ELEV 617	TDZE 617
----------	----------

CATEGORY	A	B	C	D	E
S-ILS 24R*	817/24 200 (200-½)				
S-LOC 24R**	940/24 323 (400-½)	940/26 323 (400-½)		1240-2 1240-2 1/4	
CIRCLING***	1060-1 443 (500-1)	1080-1 463 (500-1)	1240-1 3/4 623 (700-1 3/4)	1240-2 623 (700-2)	1240-2 1/4 623 (700-2 1/4)



HIRL all rwys					
FAF to MAP 4.1 NM					
Knots	60	90	120	150	180
Min:Sec	4:06	2:44	2:03	1:38	1:22

YIGO, GUAM I, GUAM

13° 35' N-144° 56' E

ANDERSEN AFB (PGUA)

Orig 19FEB26
TERPS

ILS Z or LOC Z RWY 24R