

YIGO, GUAM I, GUAM

# RNAV (GPS) RWY 24L

APCH CRS <b>244°</b>	Rwy Idg <b>11,199</b>
	TDZE <b>607</b>
	Arprt Elev <b>617</b>

(USAF)

ANDERSEN AFB (PGUA)

RNP APCH. DME/DME RNP - 0.3 NA

**▼** \* When ALS inop, increase CAT AB RVR to 55, vis to 1 mile; CAT CDE RVR to 50, vis to 1 mile.  
\*\* Circling not authorized NW of Rwy 06L-24R.

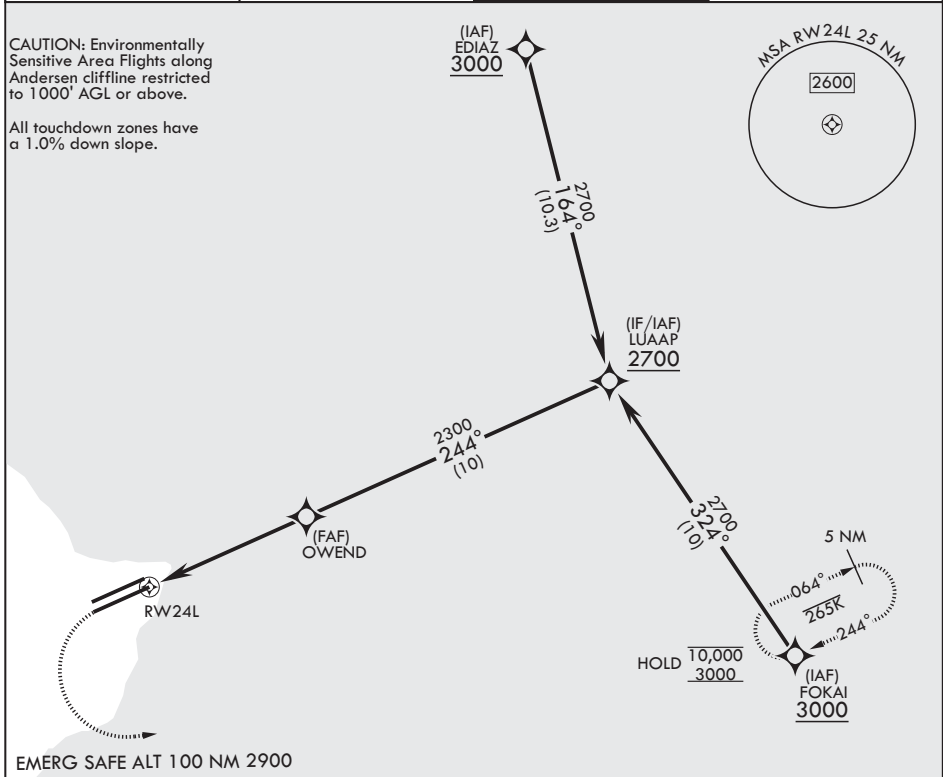


MISSED APPROACH: Climb to 1200, then climbing left turn to 3000 direct FOKAI and hold.

ATIS <b>118.175 254.325</b>	GUAM APP CON/DEP CON <b>119.8 269.0</b>	TOWER <b>126.2 233.7</b>	GND CON <b>121.7 275.8</b>
--------------------------------	--	-----------------------------	-------------------------------

CAUTION: Environmentally Sensitive Area Flights along Andersen cliffline restricted to 1000' AGL or above.

All touchdown zones have a 1.0% down slope.



EMERG SAFE ALT 100 NM 2900

			ELEV 617	TDZE 607																		
<table border="1"> <tr> <th>CATEGORY</th> <th>A</th> <th>B</th> <th>C</th> <th>D</th> <th>E</th> </tr> <tr> <td>RNAV MDA*</td> <td>940/40</td> <td>333 (400-¾)</td> <td>940/45</td> <td>333 (400-¾)</td> <td></td> </tr> <tr> <td>CIRCLING**</td> <td>1060-1 443 (500-1)</td> <td>1080-1 463 (500-1)</td> <td>1240-1¼ 623 (700-1¼)</td> <td>1240-2 623 (700-2)</td> <td>1240-2¼ 623 (700-2¼)</td> </tr> </table>	CATEGORY	A	B	C	D	E	RNAV MDA*	940/40	333 (400-¾)	940/45	333 (400-¾)		CIRCLING**	1060-1 443 (500-1)	1080-1 463 (500-1)	1240-1¼ 623 (700-1¼)	1240-2 623 (700-2)	1240-2¼ 623 (700-2¼)	<p>≤ 3.00° TCH 43</p>		<p>TWR BCN 735</p>	
CATEGORY	A	B	C	D	E																	
RNAV MDA*	940/40	333 (400-¾)	940/45	333 (400-¾)																		
CIRCLING**	1060-1 443 (500-1)	1080-1 463 (500-1)	1240-1¼ 623 (700-1¼)	1240-2 623 (700-2)	1240-2¼ 623 (700-2¼)																	
HIRL all rwys																						

YIGO, GUAM I, GUAM

13°35'N - 144°56'E

ANDERSEN AFB (PGUA)

Amdt 1 17JUN21  
TERPS

# RNAV (GPS) RWY 24L

PAC, 14 MAY 2026 to 09 JUL 2026

PAC, 14 MAY 2026 to 09 JUL 2026