

YIGO, GUAM I, GUAM

# RNAV (GPS) RWY 24R

APCH CRS <b>244°</b>	Rwy Idg <b>10,527</b>
	TDZE <b>617</b>
	Arprt Elev <b>617</b>

(USAF)

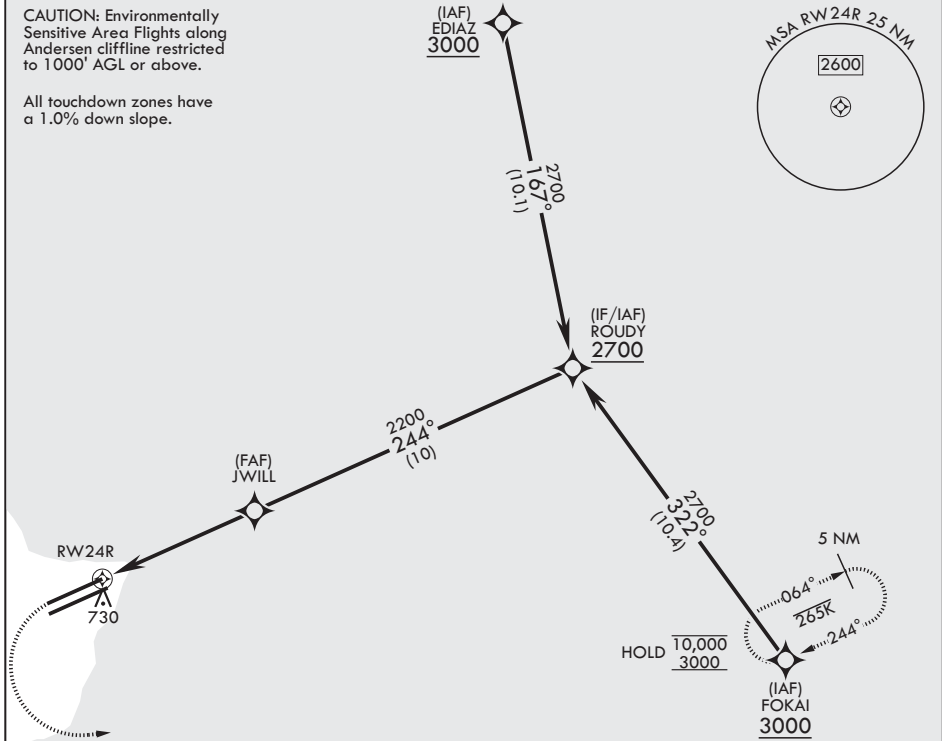
ANDERSEN AFB (PGUA)

RNP APCH. DME/DME RNP - 0.3 NA	ALS-1	MISSED APPROACH: Climb to 1200, then climbing left turn to 3000 direct FOKAI and hold.
<p>▼ * When ALS inop, increase RVR to 55, vis to 1 mile.</p> <p>** Circling not authorized NW of Rwy 06L-24R.</p>		

ATIS <b>118.175 254.325</b>	GUAM APP CON/DEP CON <b>119.8 269.0</b>	TOWER <b>126.2 233.7</b>	GND CON <b>121.7 275.8</b>
--------------------------------	--	-----------------------------	-------------------------------

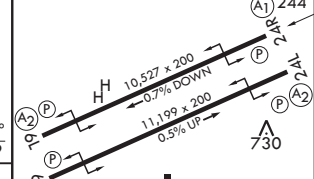
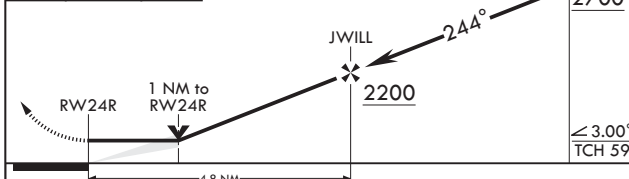
CAUTION: Environmentally Sensitive Area Flights along Andersen cliffline restricted to 1000' AGL or above.

All touchdown zones have a 1.0% down slope.



EMERG SAFE ALT 100 NM 2900

ELEV 617	TDZE 617	



CATEGORY	A	B	C	D	E
LNAV MDA*	960/24 343 (400-½)		960/30 343 (400-¾)		
CIRCLING**	1060-1 443 (500-1)	1080-1 463 (500-1)	1240-1¼ 623 (700-1¼)	1240-2 623 (700-2)	1240-2¼ 623 (700-2¼)

HIRL all rwys

YIGO, GUAM I, GUAM

13°35'N - 144°56'E

ANDERSEN AFB (PGUA)

Amdt 1 17JUN21  
TERPS

# RNAV (GPS) RWY 24R

PAC, 14 MAY 2026 to 09 JUL 2026

PAC, 14 MAY 2026 to 09 JUL 2026