

YIGO, GUAM I, GUAM

RNAV (GPS) RWY 06L

APCH CRS 064°	Rwy Idg TDZE Arprt Elev	10,527 539 617
-------------------------	-------------------------------	---

(USAF)

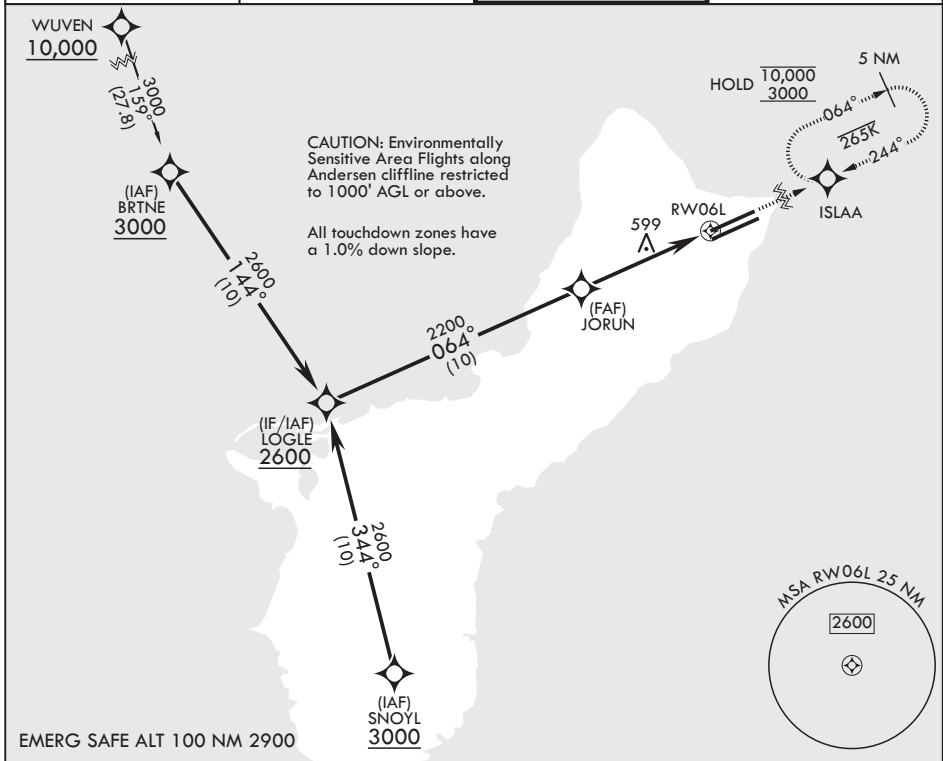
ANDERSEN AFB (PGUA)

RNP APCH. DME/DME RNP - 0.3 NA

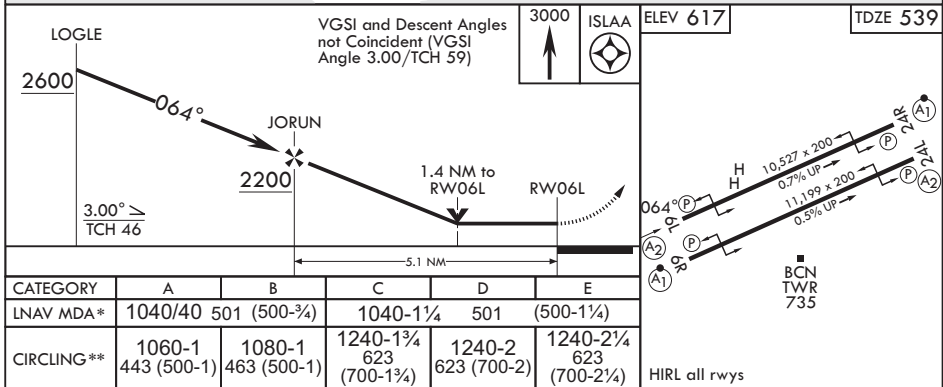
▼ * When ALS inop increase CAT AB RVR to 55, vis to 1 mile; CAT CDE vis to 1 3/8 miles.
** Circling not authorized NW of Rwy 06L-24R.
Circling not authorized to Rwys 06L and 24R.

SALS (A2) MISSED APPROACH: Climb to 3000 direct ISLAA and hold.

ATIS 118.175 254.325	GUAM APP CON/DEP CON 119.8 269.0	TOWER 126.2 233.7	GND CON 121.7 275.8
--------------------------------	--	-----------------------------	-------------------------------



EMERG SAFE ALT 100 NM 2900



CATEGORY	A	B	C	D	E
LNAV MDA*	1040/40 501 (500-3/4)		1040-1 1/4 501		(500-1 1/4)
CIRCLING**	1060-1 443 (500-1)	1080-1 463 (500-1)	1240-1 3/4 623 (700-1 1/4)	1240-2 623 (700-2)	1240-2 1/4 623 (700-2 1/4)

HIRL all rwys

YIGO, GUAM I, GUAM

13°35'N - 144°56'E

ANDERSEN AFB (PGUA)

Amdt 1 17JUN21
TERPS

RNAV (GPS) RWY 06L

PAC, 14 MAY 2026 to 09 JUL 2026

PAC, 14 MAY 2026 to 09 JUL 2026