

YIGO, GUAM I, GUAM

RNAV (GPS) RWY 06R

APCH CRS 064°	Rwy Idg 11,199
	TDZE 557
	Arprt Elev 617

(USAF)

ANDERSEN AFB (PGUA)

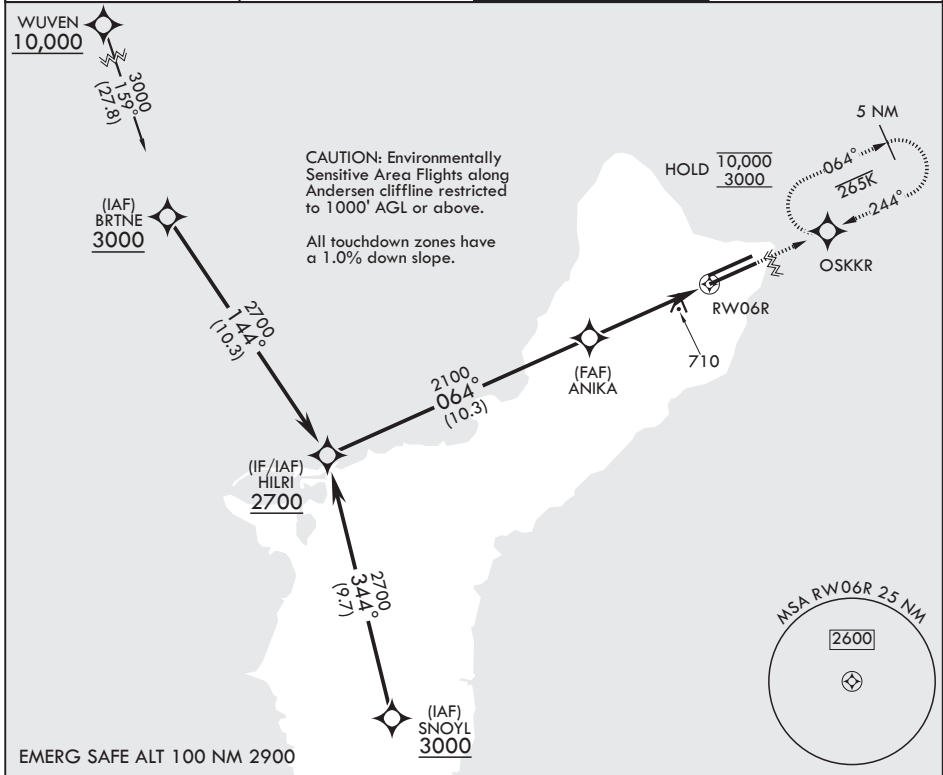
RNP APCH. DME/DME RNP - 0.3 NA



MISSED APPROACH: Climb to 3000 direct OSKKR and hold.

▼ * When ALS inop, increase CAT AB RVR to 55, vis to 1 mile; CAT CDE vis to 1 3/8 miles.
** Circling not authorized NW of Rwy 6L-24R.

ATIS 118.175 254.325	GUAM APP CON/DEP CON 119.8 269.0	TOWER 126.2 233.7	GND CON 121.7 275.8
--------------------------------	--	-----------------------------	-------------------------------



HILRI 2700	OSKKR ELEV 617	TDZE 557			
CATEGORY	A	B	C	D	E
LNAV MDA*	1040/24	483 (500-½)	1040/50	483	(500-1)
CIRCLING**	1060-1 443 (500-1)	1080-1 463 (500-1)	1240-1¼ 623 (700-1¼)	1240-2 623 (700-2)	1240-2¼ 623 (700-2¼)
HIRL all rwys					

YIGO, GUAM I, GUAM

13°35'N - 144°56'E

ANDERSEN AFB (PGUA)

Amdt 1 17JUN21
TERPS

RNAV (GPS) RWY 06R

PAC, 14 MAY 2026 to 09 JUL 2026

PAC, 14 MAY 2026 to 09 JUL 2026