

YIGO, GUAM I, GUAM

TACAN Y RWY 24L

VORTAC UNZ 115.8 Chan T05	APCH CRS 236°	Rwy ldg TDZE 11,199 607 Arprt Elev 617
---	-------------------------	---

(USAF)

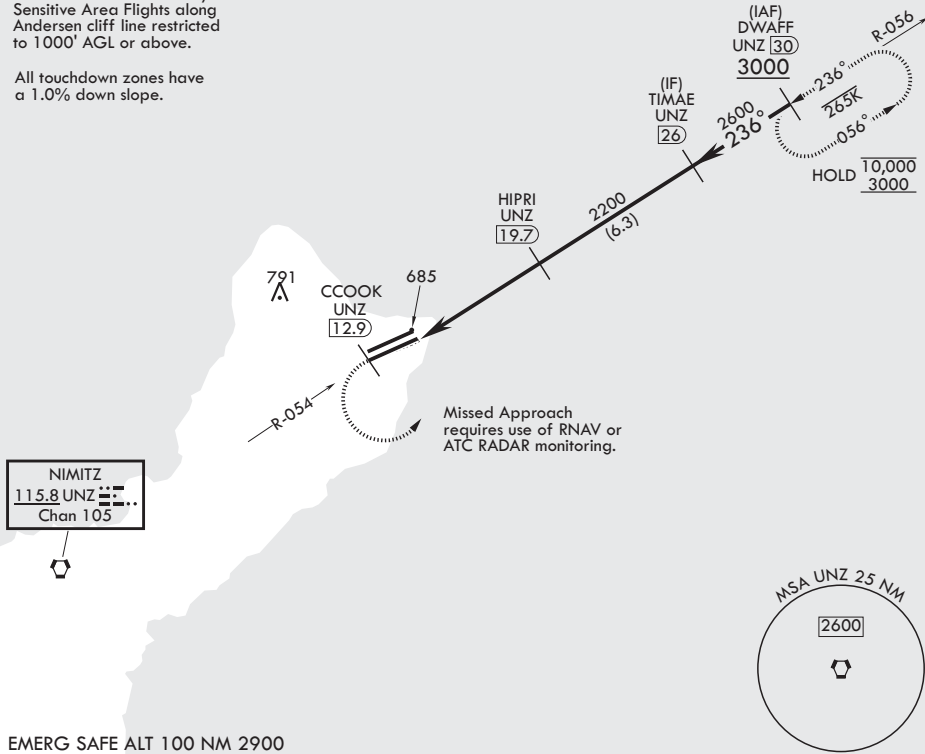
ANDERSEN AFB (PGUA)

<p>⚠ * When ALS inop increase CAT AB RVR to 55, vis to 1 mile; CAT CDE RVR to 50, vis to 1 mile. ** Circling not authorized NW of Rwy 06L-24R.</p>	<p>SALS (A2)</p>	<p>MISSED APPROACH: Climb to 3000 direct CCOOK, then climbing left turn to intercept UNZ R-056 and hold.</p>
---	-----------------------------	--

<p>ATIS 118.175 254.325</p>	<p>GUAM APP CON/DEP CON 119.8 269.0</p>	<p>TOWER 126.2 233.7</p>	<p>GND CON 121.7 275.8</p>
--	--	-------------------------------------	---------------------------------------

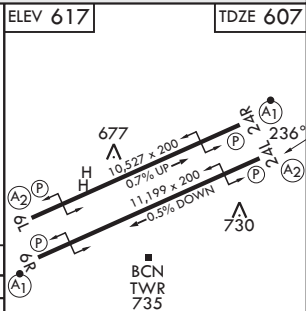
CAUTION: Environmentally Sensitive Area Flights along Andersen cliff line restricted to 1000' AGL or above.

All touchdown zones have a 1.0% down slope.



EMERG SAFE ALT 100 NM 2900

<p>3000 ↑</p>	<p>CCOOK UNZ (12.9) R-056</p>	<p>DWAFF UNZ (30)</p>	<p>ELEV 617</p>	<p>TDZE 607</p>	
<p>VORTAC</p>	<p>WEVUS (14.8) (15.6)</p>	<p>HIPRI (19.7) 2200</p>	<p>TIMAE (26) 2600</p>	<p>DWAFF (30) 3000</p>	
<p>1.1 NM</p>		<p>4.9 NM</p>		<p>≤ 2.94° TCH 43</p>	
<p>CATEGORY</p>	<p>A</p>	<p>B</p>	<p>C</p>	<p>D</p>	<p>E</p>
<p>S-24L*</p>	<p>940/40</p>	<p>333 (400-¾)</p>	<p>940/45</p>	<p>333 (400-¾)</p>	
<p>CIRCLING**</p>	<p>1060-1 443 (500-1)</p>	<p>1080-1 463 (500-1)</p>	<p>1240-1¼ 623 (700-1¼)</p>	<p>1240-2 623 (700-2)</p>	<p>1240-2¼ 623 (700-2¼)</p>
<p>HIRL all rwys</p>					



YIGO, GUAM I, GUAM

13°35'N - 144°56'E

ANDERSEN AFB (PGUA)

Amdt 2 17JUN21
TERPS

TACAN Y RWY 24L

PAC, 14 MAY 2026 to 09 JUL 2026

PAC, 14 MAY 2026 to 09 JUL 2026