

YIGO, GUAM I, GUAM

TACAN Y RWY 06R

VORTAC UNZ 115.8 Chan T05	APCH CRS 054°	Rwy ldg TDZE 11,199 Arpt Elev 557 617
---	-------------------------	---

(USAF)

ANDERSEN AFB (PGUA)

▼ * When ALS inop, increase CAT AB RVR to 55, vis to 1 mile, CAT CDE vis to 1 3/8 miles.
** Circling not authorized NW of Rwy 6L-24R.

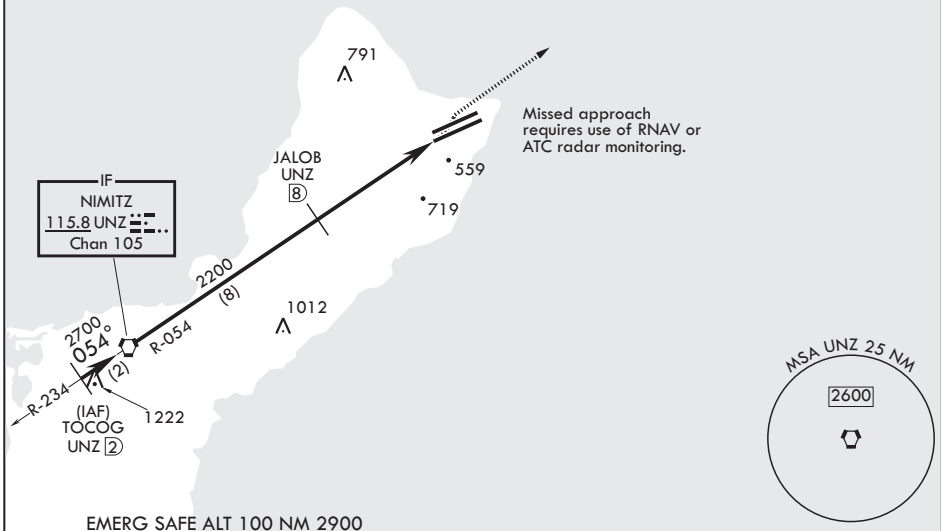
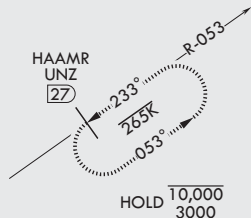


MISSED APPROACH: Climb to 3000, intercept UNZ R-053 to HAAMR and hold.

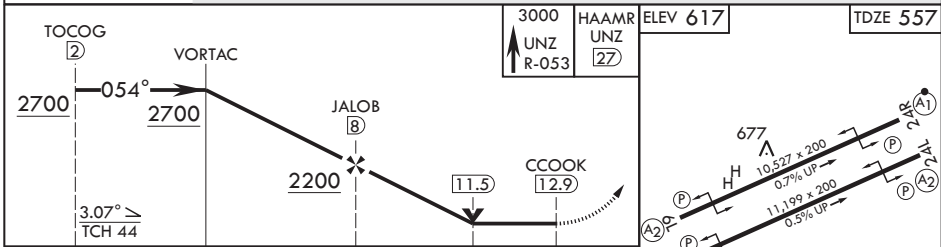
ATIS 118.175 254.325	GUAM APP CON/DEP CON 119.8 269.0	TOWER 126.2 233.7	GND CON 121.7 275.8
--------------------------------	--	-----------------------------	-------------------------------

CAUTION: Environmentally Sensitive Area Flights along Anderson cliff line restricted to 1000' AGL or above.

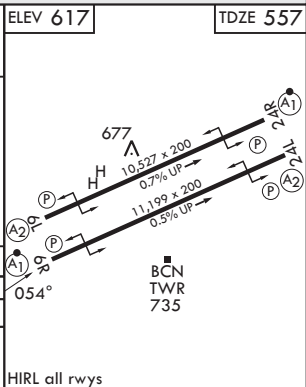
All touchdown zones have a 1.0% down slope.



EMERG SAFE ALT 100 NM 2900



CATEGORY	A	B	C	D	E
S-6R*	1060/24	503 (500-½)	1060/55	503	(500-1)
CIRCLING**	1060-1 443 (500-1)	1080-1 463 (500-1)	1240-1¼ 623 (700-1¼)	1240-2 623 (700-2)	1240-2¼ 623 (700-2¼)



YIGO, GUAM I, GUAM

13°35'N - 144°56'E

ANDERSEN AFB (PGUA)

Amdt 2 17JUN21
TERPS

TACAN Y RWY 06R

PAC, 14 MAY 2026 to 09 JUL 2026

PAC, 14 MAY 2026 to 09 JUL 2026