

YIGO, GUAM I, GUAM

# TACAN Z RWY 24L

TACAN UAM Chan 54	APCH CRS 256°	Rwy Idg TDZE Arprt Elev	11,199 607 617
----------------------	------------------	----------------------------	----------------------

(USAF)

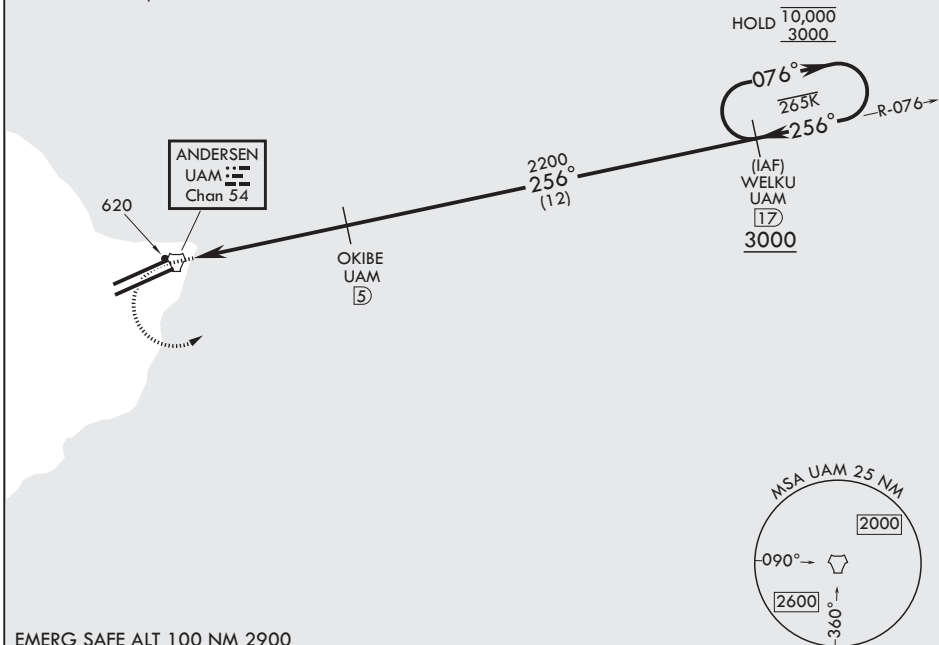
ANDERSEN AFB (PGUA)

RADAR or DME required	SALS	MISSED APPROACH: Climb to 1100, then climbing left turn to 3000 to intercept UAM R-076 to WELKU and hold.
<p><b>▼</b> * When ALS inop, increase CAT AB RVR to 55, vis to 1 mile; CAT CDE RVR to 50, vis to 1 mile. ** Circling not authorized NW of Rwy 6L-24R.</p>		

ATIS 118.175 254.325	GUAM APP CON/DEP CON 119.8 269.0	TOWER 126.2 233.7	GND CON 121.7 275.8
-------------------------	-------------------------------------	----------------------	------------------------

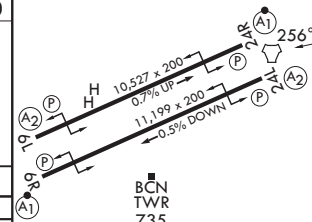
CAUTION: Environmentally Sensitive Area Flights along Andersen cliff line restricted to 1000' AGL or above.

All touchdown zones have a 1.0% down slope.



EMERG SAFE ALT 100 NM 2900

<p>1100 3000 UAM R-076 WELKU UAM (17)</p>	<p>ELEV 617 TDZE 607</p>
<p>WELKU (17) 076° → ← 256° 10,000 3000</p>	<p>OKIBE (5) 2200</p>
<p>TACAN BAVAC (5) 0.6 ← 4.5 NM</p>	<p>≤ 2.85° TCH 43</p>
<p>CATEGORY</p>	<p>A B C D E</p>
<p>S-24L*</p>	<p>940/40 333 (400-¾) 940/45 333 (400-¾)</p>
<p>CIRCLING**</p>	<p>1060-1 443 (500-1) 1080-1 463 (500-1) 1240-1¼ 623 (700-1¼) 1240-2 623 (700-2) 1240-2¼ 623 (700-2¼)</p>
<p>HIRL all rwys</p>	



YIGO, GUAM I, GUAM

13°35'N - 144°56'E

ANDERSEN AFB (PGUA)

Amdt 2 17JUN21  
TERPS

# TACAN Z RWY 24L

PAC, 14 MAY 2026 to 09 JUL 2026

PAC, 14 MAY 2026 to 09 JUL 2026