

YIGO, GUAM I, GUAM

TACAN Z RWY 24R

TACAN UAM Chan 54	APCH CRS 231°	Rwy Idg 10,527
		TDZE 617
		Arprt Elev 617

(USAF)

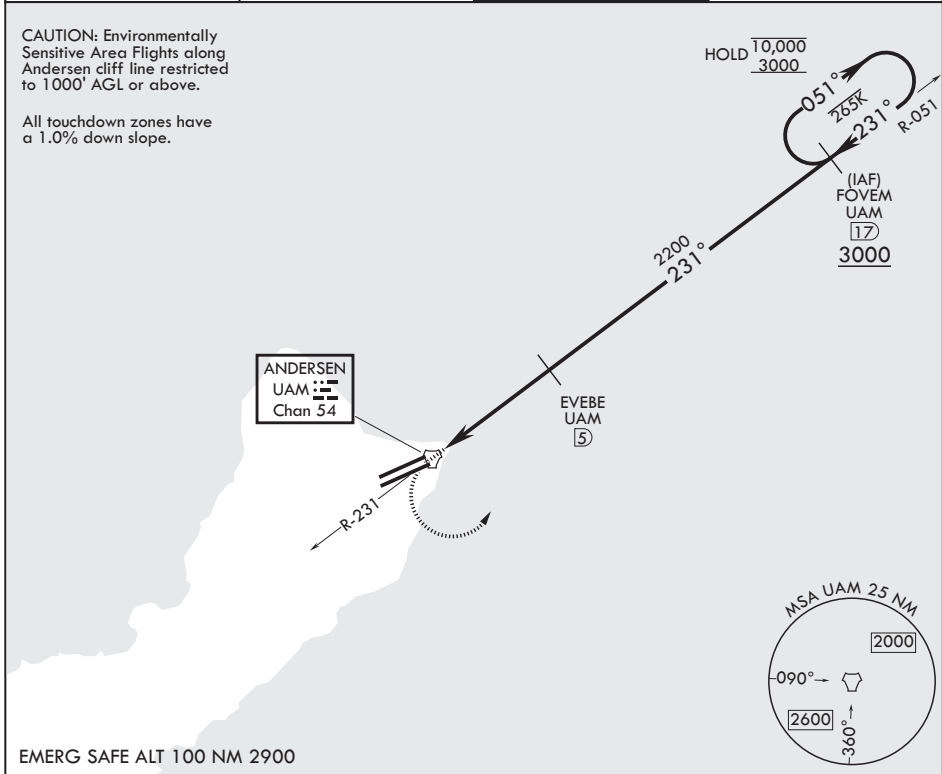
ANDERSEN AFB (PGUA)

RADAR or DME required	ALSF-1	MISSED APPROACH: Climb to 1100, then climbing left turn to 3000 to intercept UAM R-051 and hold.
<p>▼ * When ALS inop, increase CAT AB RVR to 55, vis to 1 mile; CAT CDE RVR to 50, vis to 1 mile.</p> <p>** Circling not authorized NW of Rwy 06L-24R.</p>		

ATIS 118.175 254.325	GUAM APP CON/DEP CON 119.8 269.0	TOWER 126.2 233.7	GND CON 121.7 275.8
-------------------------	-------------------------------------	----------------------	------------------------

CAUTION: Environmentally Sensitive Area Flights along Andersen cliff line restricted to 1000' AGL or above.

All touchdown zones have a 1.0% down slope.



EMERG SAFE ALT 100 NM 2900

1100	3000	FOVEM UAM 17	VGSI and ILS glidepath not coincident (VGSI angle 3.00/TCH 59).	FOVEM 17	ELEV 617	TDZE 617
UAM R-051				051°		
				10,000		
				3000		
				231°		
				231°		
				≤ 2.79°		
				TCH 59		
CATEGORY	A	B	C	D	E	
S-24R*	940/24 323 (400-½)		940/40 323 (400-¾)			
CIRCLING**	1060-1 443 (500-1)	1080-1 463 (500-1)	1240-1¼ 623 (700-1¼)	1240-2 623 (700-2)	1240-2¼ 623 (700-2¼)	
						HIRL all rwys

YIGO, GUAM I, GUAM

13°35'N - 144°56'E

ANDERSEN AFB (PGUA)

Amdt 2 17JUN21
TERPS

TACAN Z RWY 24R

PAC, 14 MAY 2026 to 09 JUL 2026

PAC, 14 MAY 2026 to 09 JUL 2026