

YIGO, GUAM I, GUAM

# TACAN Z RWY 06L

TACAN UAM Chan 54	APCH CRS 065°	Rwy Idg TDZE Arprt Elev	10,527 539 617
----------------------	------------------	-------------------------------	----------------------

(USAF)

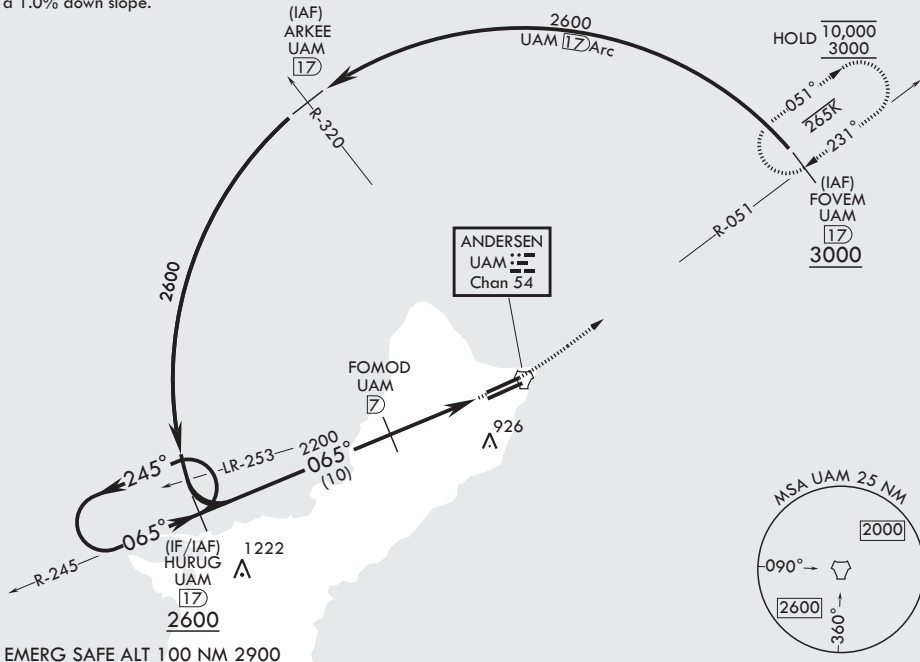
ANDERSEN AFB (PGUA)

RADAR or DME required		SALS 	MISSED APPROACH: Climb to 3000, intercept UAM R-051 to FOVEM and hold.
<p>▼ * When ALS inop, increase CAT AB RVR to 55, vis to 1 mile, CAT CDE vis 1 3/8 miles. ** Circling not authorized NW of Rwy 06L-24R.</p>			

ATIS 118.175 254.325	GUAM APP CON/DEP CON 119.8 269.0	TOWER 126.2 233.7	GND CON 121.7 275.8
-------------------------	-------------------------------------	----------------------	------------------------

CAUTION: Environmentally Sensitive Area. Flights along Andersen cliffline restricted to 1000' AGL or above

All touchdown zones have a 1.0% down slope.



EMERG SAFE ALT 100 NM 2900

<p>HURUG UAM (17) One minute holding pattern. 2200</p>		<p>3000 UAM R-051</p>	<p>FOVEM UAM (17)</p>	ELEV 617	TDZE 539
<p>FOMOD UAM (Z) 2.97° TCH 60 4.5 NM, 0.6 NM</p>		<p>UAM ITUME (3.3) UAM (2.5)</p>	<p>UAM TACAN</p>	<p>10,527 x 200 (0.7% UP) 11,199 x 200 (0.5% UP) BCN TWR 735</p>	
CATEGORY	A	B	C	D	E
S-6L*	1040/40	501 (500-¾)	1040-1¼	501	(500-1¼)
CIRCLING**	1060-1 443 (500-1)	1080-1 463 (500-1)	1240-1¼ 623 (700-1¼)	1240-2 623 (700-2)	1240-2¼ 623 (700-2¼)

YIGO, GUAM I, GUAM

13°35'N - 144°56'E

ANDERSEN AFB (PGUA)

Amtd 4 14MAY26  
TERPS

# TACAN Z RWY 06L

PAC, 14 MAY 2026 to 09 JUL 2026

PAC, 14 MAY 2026 to 09 JUL 2026