

WAKE ISLAND, WAKE ISLAND

RNAV (GPS) RWY 10

APCH CRS **096°**
 Rwy Idg **9844**
 TDZE **23**
 Arpt Elev **23**

- (USAF)

WAKE ISLAND AFLD (PWAJ)

RNP APCH-GPS

MISSED APPROACH: Climbing to 4000 direct NONEY and hold. Continue climb-in-hold to 4000.

✦ * Circling not authorized N of Rwy 10-28.

WAKE OPS
128.0 349.4

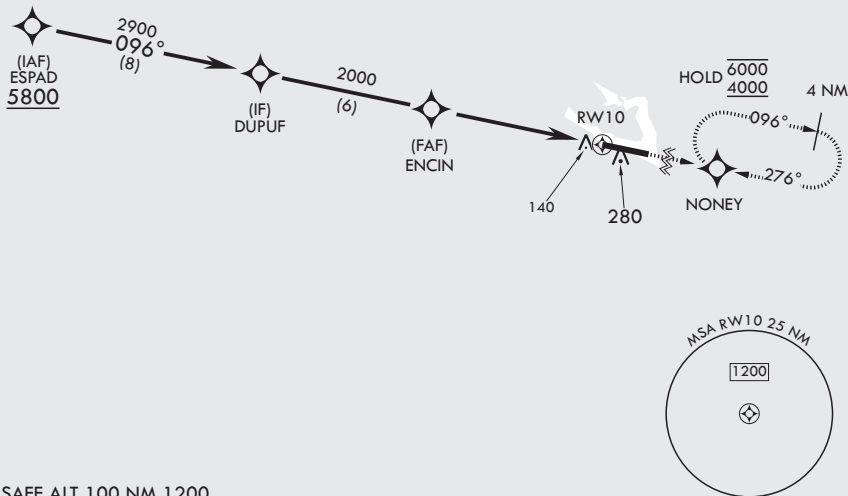
CAUTION: Procedure in uncontrolled airspace. Uncontrolled airspace below 5500' AGL.

Contact Wake Island Operations for advisory services.

CAUTION: When circling to Rwy 28 at night, operational VGSI required, remain on or above VGSI glidepath until threshold.

When VGSI inop, procedure not authorized at night.

USAF only: when VGSI inop, straight-in Rwy 10 authorized at night with MAJCOM A3 approval.



EMERG SAFE ALT 100 NM 1200

DU PUF 2900 096° 3.01° ≥ TCH 60		VGSI and descent angles not coincident (VGSI angle 3.00/TCH 76).		TA 5500 4000 NONEY ELEV 23	TDZE 23
ENCIN 2000 1.1 NM to RWY 10 RWY 10		6 NM		BCN 65 38 69 30 28 096° 98.44 x 150 280	
CATEGORY	A	B	C	D	E
LNAV MDA	460-1	437 (500-1)	460-1½	437	(500-1½)
CIRCLING*	460-1 437 (500-1)	480-1 457 (500-1)	480-1½ 457 (500-1½)	580-2	557 (600-2)
				HIRL all Rwys REIL all Rwys	

WAKE ISLAND, WAKE ISLAND

19°17'N - 166°38'E

WAKE ISLAND AFLD (PWAJ)

Amdt 3 18APR24
 TERPS

RNAV (GPS) RWY 10

PAC, 14 MAY 2026 to 09 JUL 2026

PAC, 14 MAY 2026 to 09 JUL 2026