

WAKE ISLAND, WAKE ISLAND

VOR/DME or TACAN RWY 10

VORTAC AWK 113.5 Chan 82	APCH CRS 086°	Rwy Idg TDZE 23 Arprt Elev 23	9844
--	-------------------------	---	-------------

[USAF]

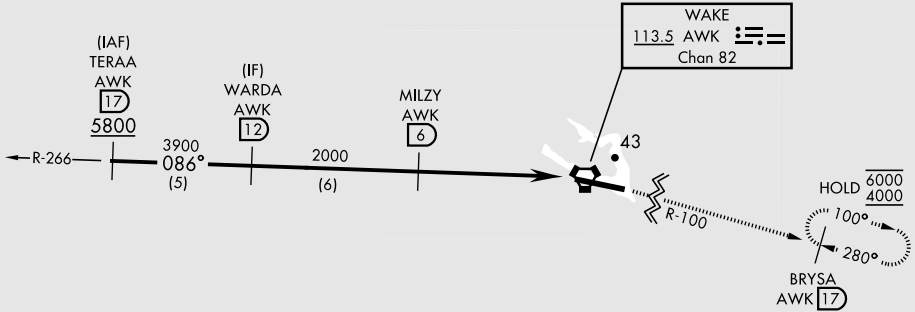
WAKE ISLAND AFLD (PWAK)

RNAV or RADAR required.

▼ * Circling not authorized N of Rwy 10-28.
Visibility reduction by helicopters not authorized.

MISSED APPROACH: Climb to 4000 on AWK VORTAC R-100
direct BRYSA and hold. Continue climb-in-hold to 4000.

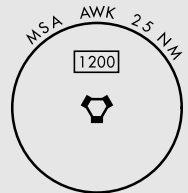
CONTACT WAKE ISLAND OPERATIONS FOR ADVISORY SERVICES
128.0 349.4



When VGSI inop, procedure not authorized at night.
USAF only: when VGSI inop, straight-in Rwy 10
authorized at night with MAJCOM A3 approval.

CAUTION: When circling to Rwy 28 at night,
operational VGSI required, remain on or above
VGSI glidepath until threshold.

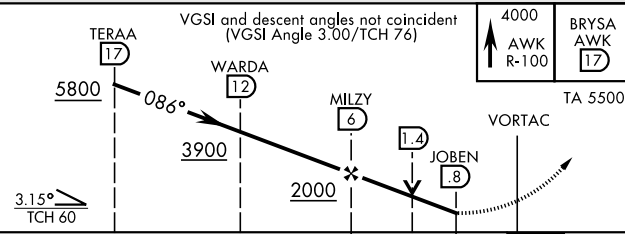
CAUTION: Procedure in uncontrolled airspace.
Uncontrolled airspace below 5500' AGL.



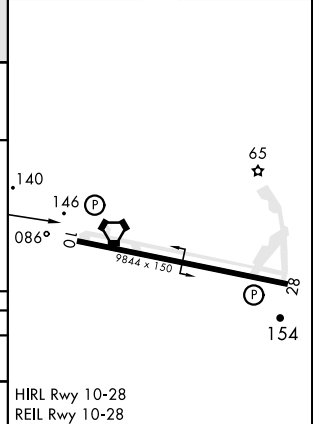
PAC, 14 MAY 2026 to 09 JUL 2026

PAC, 14 MAY 2026 to 09 JUL 2026

EMERG SAFE ALT 100 NM 1200



ELEV 23	TDZE 23
---------	---------



CATEGORY	A	B	C	D	E
S-10	460-1 437 (500-1)		460-1 1/4 437		(500-1 1/4)
C CIRCLING *	460-1 437 (500-1)	480-1 457 (500-1)	480-1 1/2 457 (500-1 1/2)	580-2 557 (600-2)	

HIRL Rwy 10-28
REIL Rwy 10-28

WAKE ISLAND, WAKE ISLAND
Orig 13JUN24
TERPS

19°17'N-166°38'E

WAKE ISLAND AFLD (PWAK)

VOR/DME or TACAN RWY 10