

ANCHORAGE CENTER  
124.2 251.1  
CAPE NEWENHAM RADIO  
126.2

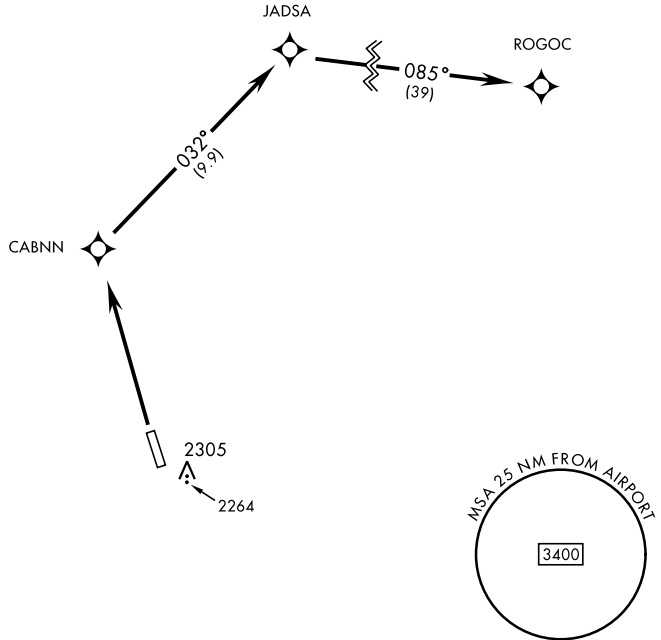
# MILITARY CERTIFIED AIRCREWS OR AUTHORIZED CONTRACT AIRCRAFT ONLY

## NOT FOR CIVIL USE

Uncontrolled Airspace below 700' AGL  
within 7 NM of Cape Newenham airport.

Night operations not authorized.

CAUTION:  
High terrain both sides and south  
end of runway.



AK, 14 MAY 2026 to 09 JUL 2026

AK, 14 MAY 2026 to 09 JUL 2026



### DEPARTURE ROUTE DESCRIPTION

TAKEOFF RWY 15: NA

TAKEOFF RWY 33: Climb to 5000 direct CABNN, then via track 032° to JADSA, then via track 085° to ROGOC, join T223.