

NDB/DME RWY 15

NDB/DME EHM 385 Chan 18 (Y)	APCH CRS 182°	Rwy ldg TDZE 456 Arpt Elev 531
---	-------------------------	---

[USAF]

CAPE NEWENHAM LRRS (PAEH)

<p>▼ Night operations not authorized.</p>	<p>MISSED APPROACH: Climbing right turn to 4500, intercept EHM NDB 002° bearing to ELPEE and hold, continue climb in holding to 4500.</p>
--	---

<p>ANCHORAGE CENTER 124.2 251.1</p>	<p>CAPE NEWENHAM RADIO 126.2</p>
--	---

**MILITARY CERTIFIED
AIRCREWS OR AUTHORIZED
CONTRACT AIRCRAFT
ONLY**

NOT FOR CIVIL USE

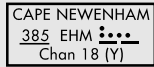
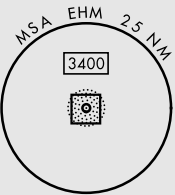
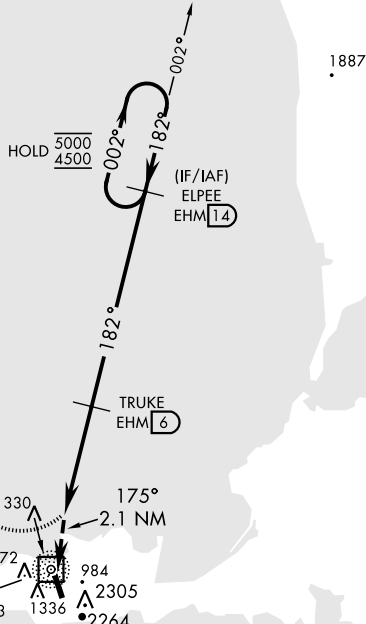
CAUTION:

1. Rwy located on slope of 2306' mountain. High terrain both sides and S end of Rwy.

2. Successful go-around improbable if initiated past the MAP.

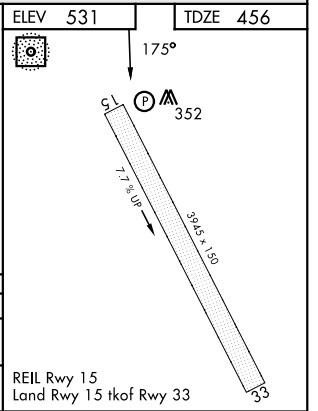
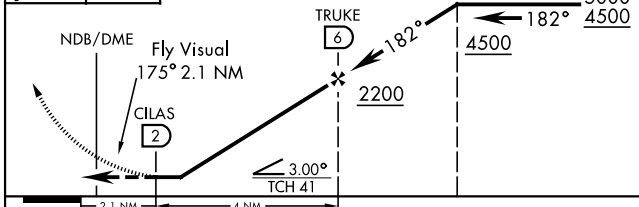
Uncontrolled Airspace below 700' AGL within 7 NM of Cape Newenham airport.

Terrain, 235' MSL, 200' from threshold, 1611' left of course.



EMERG SAFE ALT 100 NM 7100

4500 brg 002°	ELPEE EHM 14	VGSI and descent angles not coincident (VGSI 3.00/TCH 45)	ELPEE 14	ELEV 531	TDZE 456
------------------	--------------	---	----------	----------	----------



CATEGORY	A	B	C	D
S-15	1240-2½	784	(800-2½)	NOT AUTHORIZED
CIRCLING	NOT AUTHORIZED			

CAPE NEWENHAM, ALASKA 58°39'N-162°04'W CAPE NEWENHAM LRRS (PAEH)

NDB/DME RWY 15

AK, 14 MAY 2026 to 09 JUL 2026

AK, 14 MAY 2026 to 09 JUL 2026