

APCH CRS 172°	Rwy Idg 3945
	TDZE 456
	Arprt Elev 531

(USAF)

CAPE NEWENHAM LRRS (PAEH)

RNP APCH	MISSED APPROACH: Climbing right turn to 3500 direct WAGEN and hold.
----------	---

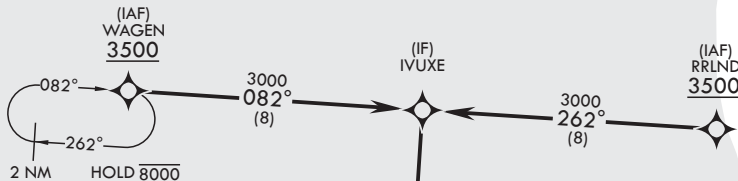
ANCHORAGE CENTER 124.2 251.1	RADIO 126.2 (CTAF)
--	------------------------------

Night operations not authorized.

Visibility reduction by helicopters not authorized.

CAUTION:

1. Rwy located on slope of 2306' mountain. High terrain both sides and S end of rwy.
2. Successful go-around improbable if initiated past the MAP.



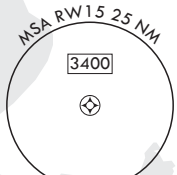
Unlit terrain 235' MSL, 200' from threshold, 200' left of course.

Uncontrolled Airspace below 700' AGL within 7 NM of Cape Newenham airport.

Final approach course offset 19.94°.

NOT FOR CIVIL USE

MILITARY CERTIFIED AIRCREWS OR AUTHORIZED CONTRACT AIRCRAFT ONLY



EMERG SAFE ALT 100 NM 7100

				ELEV 531 TDZE 456
VGS1 and descent angles not coincident (VGS1 Angle 3.00°/TCH 45).				
CATEGORY	A	B	C	D
LNAV MDA	1320-3	864	(800-3)	NA
CIRCLING	NOT AUTHORIZED			
				Land Rwy 15 Tkof Rwy 33 REIL Rwy 15

AK, 14 MAY 2026 to 09 JUL 2026

AK, 14 MAY 2026 to 09 JUL 2026