

CAPE ROMANZOF SIX DEPARTURE (OBSTACLE) (CZF6.HPB)

CAPE ROMANZOF, ALASKA

CTAF
126.2
KENAI RADIO
122.1
ANCHORAGE CENTER
124.5 266.8

[USAF]

MILITARY CERTIFIED
AIRCREWS OR AUTHORIZED
CONTRACT AIRCRAFT ONLY

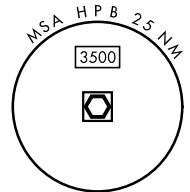
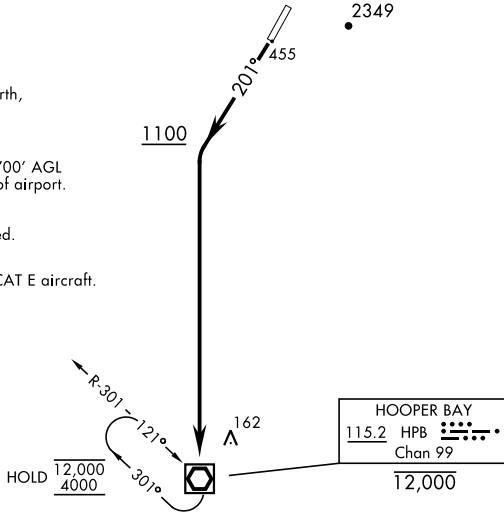
NOT FOR CIVIL USE

CAUTION:
Terrain rises rapidly West, North,
and East of centerline.

Uncontrolled Airspace below 700' AGL
within 7 NM of Cape Romanzof airport.

Night operations not authorized.

Procedure not authorized for CAT E aircraft.



DEPARTURE ROUTE DESCRIPTION

TAKEOFF RWY 2: Departures not authorized.

TAKEOFF RWY 20: Climb heading 201° to 1100, then climbing left turn direct HPB VOR/DME and hold, continue climb to 4000 or ATC assigned altitude.

AK, 14 MAY 2026 to 09 JUL 2026

AK, 14 MAY 2026 to 09 JUL 2026