

NDB/DME RWY 2

NDB CZF 275	APCH CRS 051°	Rwy ldg TDZE 444 Arprt Elev 467
-----------------------	-------------------------	--

[USAF]

CAPE ROMANZOF LRRS (PACZ)

▼ Night operations not authorized. Helicopter vis reduction below 1 mile not authorized. Circling not authorized.

MISSED APPROACH: Climb left turn to 3600 to intercept CZF NDB 231° bearing to MOTRS/12 DME and hold.

ANCHORAGE CENTER 124.5 266.8	CATF 126.2	KENAI RADIO 122.1
--	----------------------	-----------------------------

CAUTION: Final Approach Course intersects extended runway centerline 4520' prior to threshold.

Missed approach requires use of RNAV or ATC RADAR monitoring.

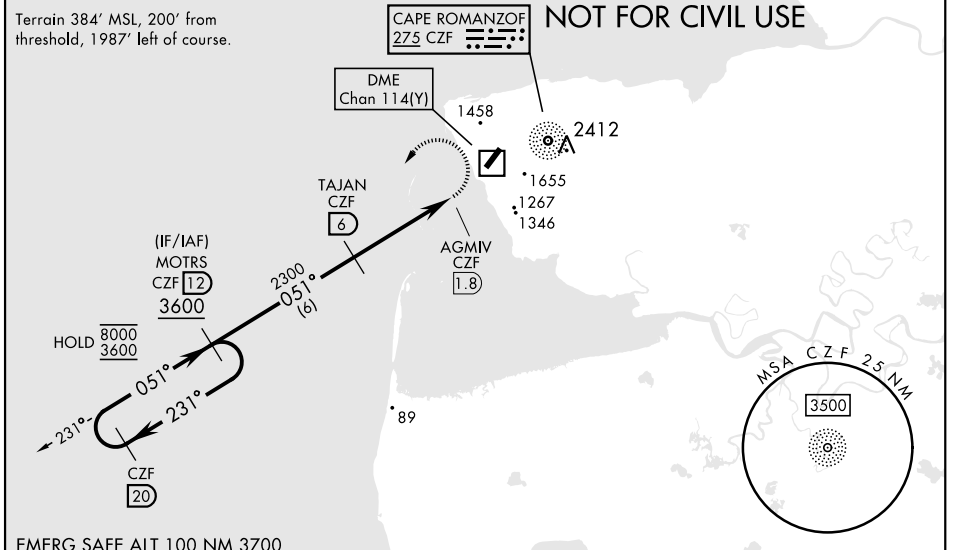
Successful go-around improvable if initiated beyond the MAP.

Uncontrolled Airspace below 700' AGL within 7 NM of Cape Romanzof airport.

Terrain 384' MSL, 200' from threshold, 1987' left of course.

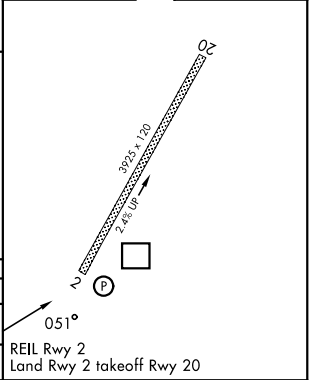
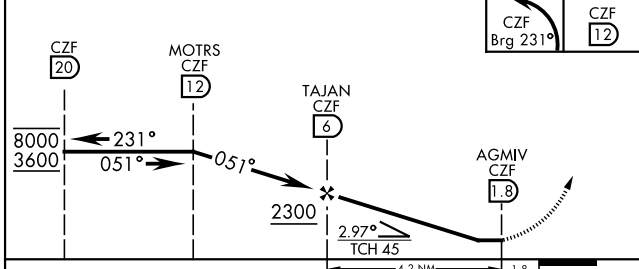
**MILITARY CERTIFIED
AIRCREWS OR AUTHORIZED
CONTRACT AIRCRAFT ONLY**

NOT FOR CIVIL USE



EMERG SAFE ALT 100 NM 3700

3600 CZF Brg 231°	MOTRS CZF 12	ELEV 467	TDZE 444
-------------------------	--------------------	-------------	-------------



CATEGORY	A	B	C
S-2	1580-2½	1136 (1200-2½)	1580-3 1136 (1200-3)
☑ CIRCLING	NOT AUTHORIZED		

REIL Rwy 2
Land Rwy 2 takeoff Rwy 20

NDB/DME RWY 2

AK, 14 MAY 2026 to 09 JUL 2026

AK, 14 MAY 2026 to 09 JUL 2026