

NDB/DME LUR 385 Chan 20 (Y)	APCH CRS 235°	Rwy ldg THRE Arprt Elev 4800 N/A 14
---	-------------------------	--

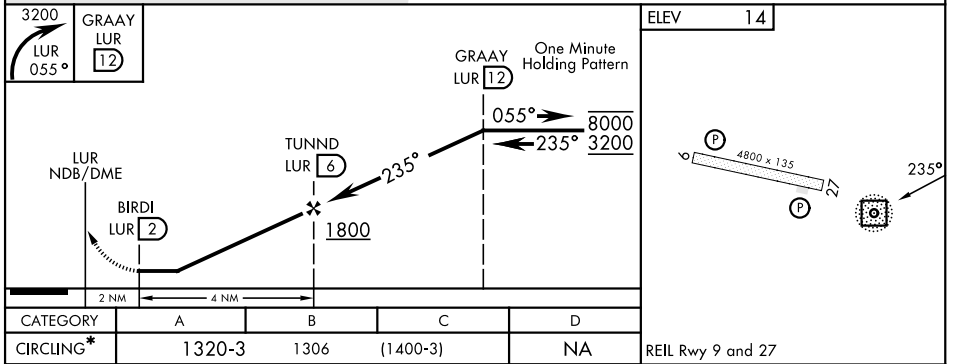
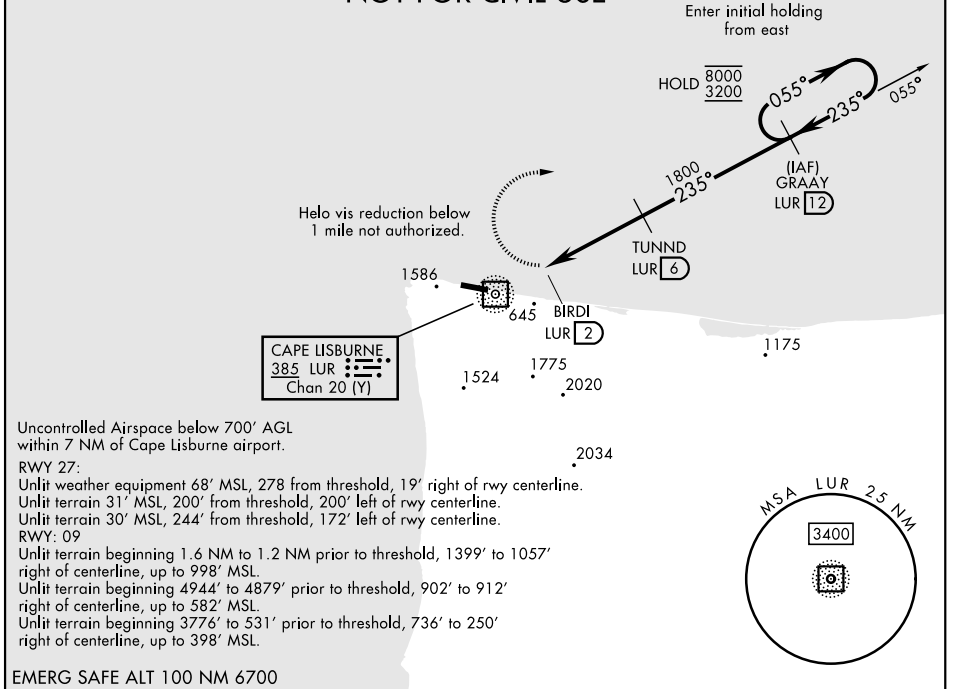
[USAF]

CAPE LISBURNE LRRS (PALU)

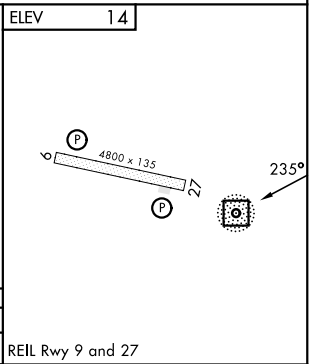
▼ * Circling not authorized S of Rwy 9-27. Night operations not authorized. MISSED APPROACH: Climbing right turn to 3200, intercept LUR 055° bearing to GRAAY and hold.

ANCHORAGE CENTER 119.65 363.25	KOTZEBUE RADIO ★ 122.3	CTAF 126.2
--	----------------------------------	----------------------

**MILITARY CERTIFIED
AIRCREWS OR AUTHORIZED
CONTRACT AIRCRAFT ONLY
NOT FOR CIVIL USE**



CATEGORY	A	B	C	D
CIRCLING*	1320-3	1306	(1400-3)	NA



REIL Rwy 9 and 27

AK, 14 MAY 2026 to 09 JUL 2026

AK, 14 MAY 2026 to 09 JUL 2026