

RNAV (GPS) RWY 27

APCH CRS 258°	Rwy ldg 4800
	THRE 14
	Arpt Elev 14

[USAF]

CAPE LISBURNE LRRS (PALU)

RNP APCH - GFS
 * Circling not authorized S of runway 9-27
 Night operations not authorized.

MISSED APPROACH: (Do not exceed 220 KIAS until turn completion).
 Climbing right turn to 3200 direct TAKME and hold.

ANCHORAGE CENTER
119.65 363.25

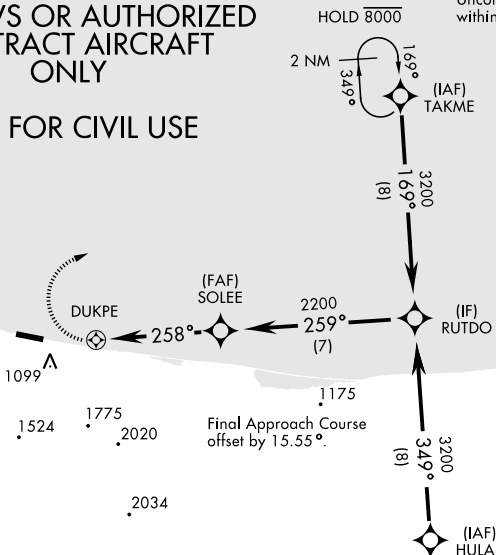
KOTZEBUE RADIO *
122.3

CTAF
126.2

**MILITARY CERTIFIED
 AIRCREWS OR AUTHORIZED
 CONTRACT AIRCRAFT
 ONLY**

NOT FOR CIVIL USE

Helo vis reduction below 1 mile not authorized.
 Uncontrolled Airspace below 700' AGL
 within 7 NM of Cape Lisburne airport.

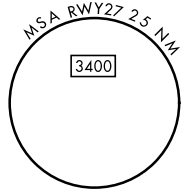


Unlit weather equipment, 68' MSL,
 278' from thld, 19' right of course.

Unlit terrain beginning 1.57 NM to
 1.16 NM prior to thld, 1398' to 1056'
 right of centerline, up to 998' MSL.

Unlit terrain beginning 4944' to
 4879' prior to thld, 902' to 912'
 right of centerline, up to 582' MSL.

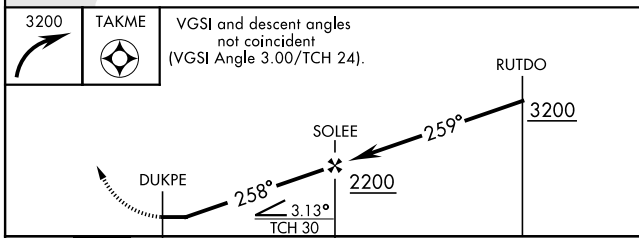
Unlit terrain beginning 3776' to
 531' prior to thld, 736' to 250'
 right of centerline, up to 398' MSL.



AK, 14 MAY 2026 to 09 JUL 2026

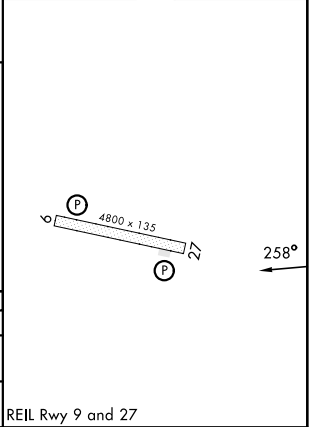
AK, 14 MAY 2026 to 09 JUL 2026

EMERG SAFE ALT 100 NM 6700



ELEV	14	THRE	14
------	----	------	----

CATEGORY	A	B	C	D
LNAV MDA	1360-2½ 1346 (1400-2½)		1360-3 1346 (1400-3)	NOT AUTHORIZED
CIRCLING*	1360-2½ 1346 (1400-2½)		1360-3 1346 (1400-3)	NOT AUTHORIZED



RNAV (GPS) RWY 27