

NDB RWY 35

NDB CRN 281	APCH CRS 357°	Rwy Idg TDZE Arprt Elev 4200 1476 1565
-----------------------	-------------------------	--

[USAF]

SPARREVOHN LRRS (PASV)

▼ Night operations not authorized.
Visibility reduction by helicopters NA.

MISSED APPROACH: Climb to 4200, then climbing right turn to 5600 direct CRN and hold. Continue climb in hold to 5600.

ANCHORAGE CENTER
134.3 351.8

KENAI RCO
122.5

SPARREVOHN RADIO
126.2 (CTAF)

AWOS-3

CAUTION: Rwy surrounded by mountains.
Rwy located on slope of 3236' mountain.
Approach from S only, land Rwy 35 only.

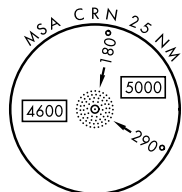
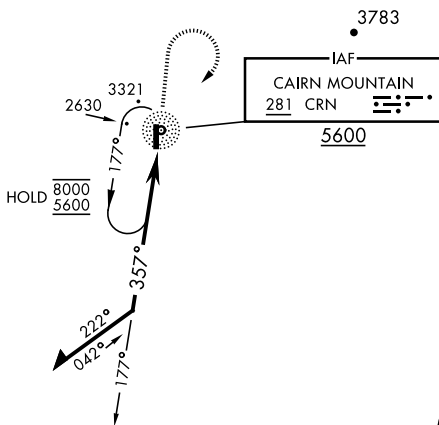
CAUTION: Terrain 1530' MSL, 2773' from thld,
1008' left of course.

Successful go-around improbable
if initiated past the MAP.

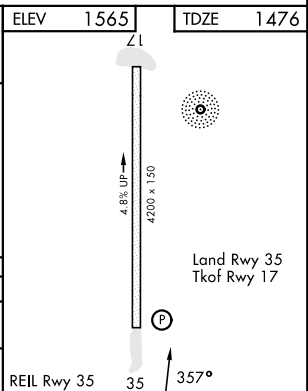
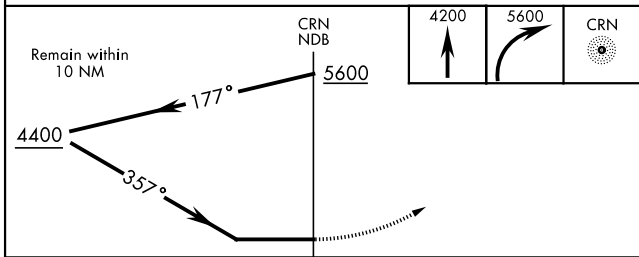
Uncontrolled Airspace
below 700' AGL within
3 NM of Sparrevohn
airport.

MILITARY CERTIFIED AIRCREWS OR AUTHORIZED CONTRACT AIRCRAFT ONLY

NOT FOR CIVIL USE



EMERG SAFE ALT 100 NM 13,700



CATEGORY	A	B	C	D
S-35	3580-1¼ 2104 (2100-1¼)	3580-1½ 2104 (2100-1½)	3580-3 2104 (2100-3)	NOT AUTHORIZED
CIRCLING	NOT AUTHORIZED			

NDB RWY 35

AK, 14 MAY 2026 to 09 JUL 2026

AK, 14 MAY 2026 to 09 JUL 2026