

RNAV (GPS) RWY 35

APCH CRS 348°	Rwy Idg 4200
	TDZE 1476
	Arprt Elev 1565

[USAF]

SPARREVOHN LRRS (PASV)

RNP APCH - GPS

▼ Night operations not authorized.
Circling not authorized.

MISSED APPROACH: Climbing right turn to 5500 direct LIVME and hold.

ANCHORAGE CENTER 134.3 351.8	KENAI RCO 122.5	UNICOM 126.2 (CTAF)	AWOS-3
--	---------------------------	-------------------------------	--------

Visibility reduction by helicopters not authorized.

**MILITARY CERTIFIED AIRCEW OR
AUTHORIZED CONTRACT AIRCRAFT ONLY
NOT FOR CIVIL USE**

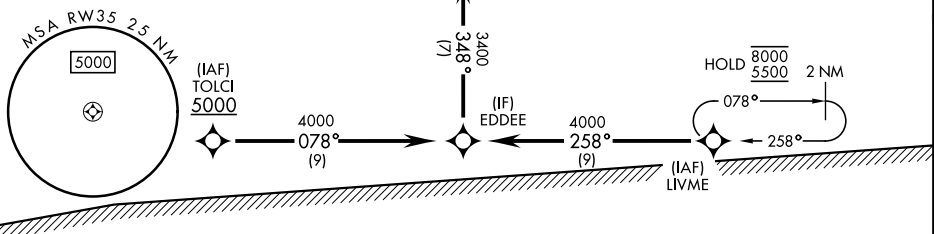
Uncontrolled airspace below
700 AGL within 3 NM of
Sparrevohn Airport.

Procedure NA when MOA 1782
(NAKNEK 2 MOA) is active unless
coordination with Anchorage Center
is completed.

CAUTION: Rwy surrounded by mountains.
Rwy located on slope of 3236' mountain.
Approach from S only, land Rwy 35 only.

CAUTION: Terrain 1530' MSL, 2773' from thld,
1008' left of course.

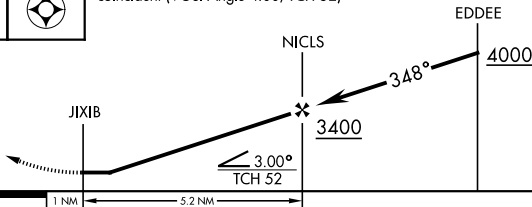
Terrain 1756' MSL, 1.1 NM from thld, 850' right of crs.
Terrain 1389' MSL, 200' from thld, 200' left of crs.
Terrain 1753' MSL, 1.2 NM from thld, 1217' left of crs.
Terrain 1369' MSL, 200' from thld, at centerline.



MOA 1782
(NAKNEK 2 MOA)

EMERG SAFE ALT 100 NM 13,700

5500	LIVME	VGSI and descent angle not coincident (VGSI Angle 4.00/TCH 52)
------	-------	--



CATEGORY	A	B	C	D
RNAV MDA	3220-1¼ 1744 (1700-1¼)	3380-1½ 1904 (1900-1½)	3460-3 1984 (1900-3)	NOT AUTHORIZED
CIRCLING	NOT AUTHORIZED			

ELEV	1565	TDZE	1476
Land Rwy 35 Takeoff Rwy 17			
REIL Rwy 35 ↑ 348°			

RNAV (GPS) RWY 35

AK, 14 MAY 2026 to 09 JUL 2026

AK, 14 MAY 2026 to 09 JUL 2026