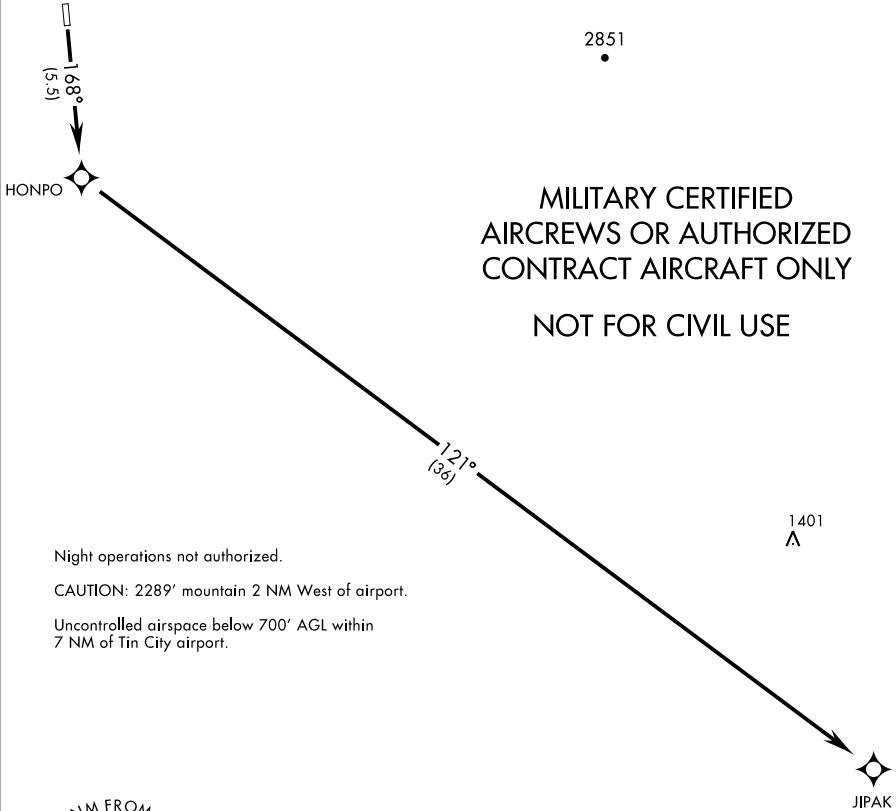


HONPO THREE DEPARTURE (OBSTACLE) (RNAV) (HONPO3.JIPAK)

TIN CITY, ALASKA

RNAV1-GPS

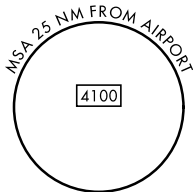
UNICOM (CTAF)
126.2
TIN CITY RCO (NOME RADIO)
122.6
ANCHORAGE CENTER
133.3 290.4



MILITARY CERTIFIED
AIRCREWS OR AUTHORIZED
CONTRACT AIRCRAFT ONLY

NOT FOR CIVIL USE

Night operations not authorized.
CAUTION: 2289' mountain 2 NM West of airport.
Uncontrolled airspace below 700' AGL within
7 NM of Tin City airport.



DEPARTURE ROUTE DESCRIPTION

TAKEOFF RWY 17: Climb to 7000 direct HONPO, then climbing left turn,
track 121° to JIPAK.

TAKEOFF RWY 35: NA