

# NDB/DME RWY 35

NDB/DME TNC <b>347</b> Chan <b>119 (Y)</b>	APCH CRS <b>343°</b>	Rwy Idg TDZE <b>273</b> Arprt Elev <b>273</b>	<b>4702</b>
--	-------------------------	--	-------------

[USAF]

TIN CITY LRRS (PATC)

▼ \* Circling not authorized W of Rwy 17-35.  
Night operations not authorized.

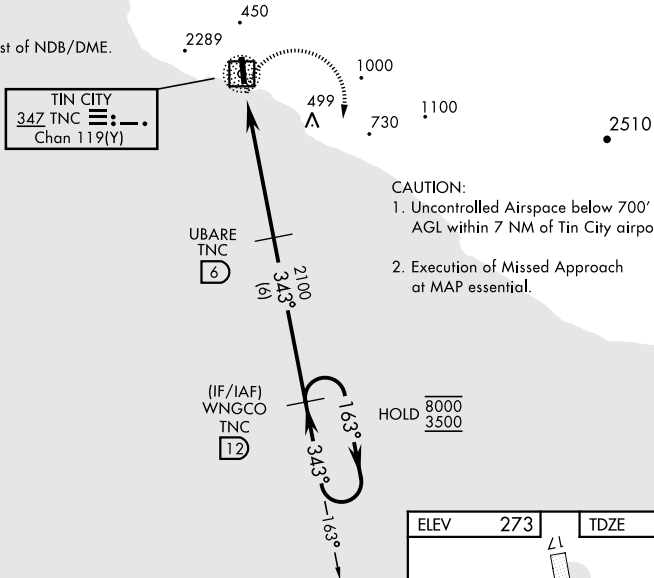
MISSED APPROACH: Climbing right turn to 3600 intercept TNC 163° bearing to WNGCO and hold.  
Continue climb-in-hold to 3600.

ANCHORAGE CENTER <b>133.3 290.4</b>	TIN CITY RCO (NOME RADIO) <b>122.6</b>	UNICOM <b>126.2 (CTAF)</b>
--	---	-------------------------------

## MILITARY CERTIFIED AIRCREWS OR AUTHORIZED CONTRACT AIRCRAFT ONLY

### NOT FOR CIVIL USE

CAUTION:  
2289' mountain 2 NM West of NDB/DME.

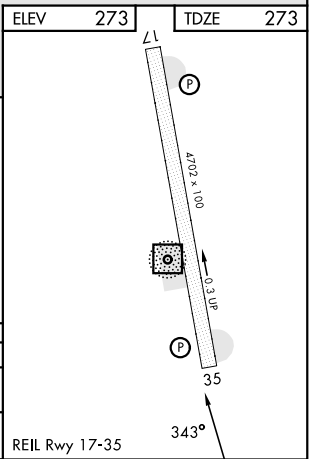
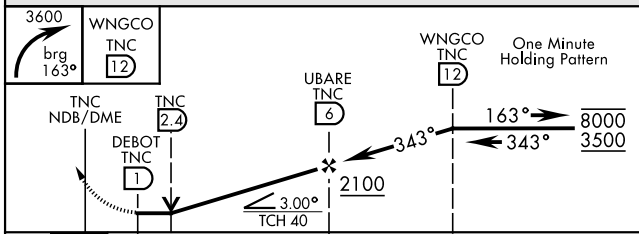


CAUTION:  
1. Uncontrolled Airspace below 700' AGL within 7 NM of Tin City airport.  
2. Execution of Missed Approach at MAP essential.

AK, 14 MAY 2026 to 09 JUL 2026

AK, 14 MAY 2026 to 09 JUL 2026

EMERG SAFE ALT 100 NM 7000



CATEGORY	A	B	C	D
S-35	980-1 707 (800-1)		980-2 707 (800-2)	NOT AUTHORIZED
◼ CIRCLING*	980-1 707 (800-1)		980-2 707 (800-2)	NOT AUTHORIZED

REIL Rwy 17-35

# NDB/DME RWY 35