

# RNAV (GPS) RWY 35

APCH CRS	Rwy ldg	4702
349°	TDZE	273
	Arprt Elev	273

[USAF]

TIN CITY LRRS (PATC)

RNP APCH-GPS

▼ Night operations not authorized.  
\* Circling not authorized W of Rwy 17-35.

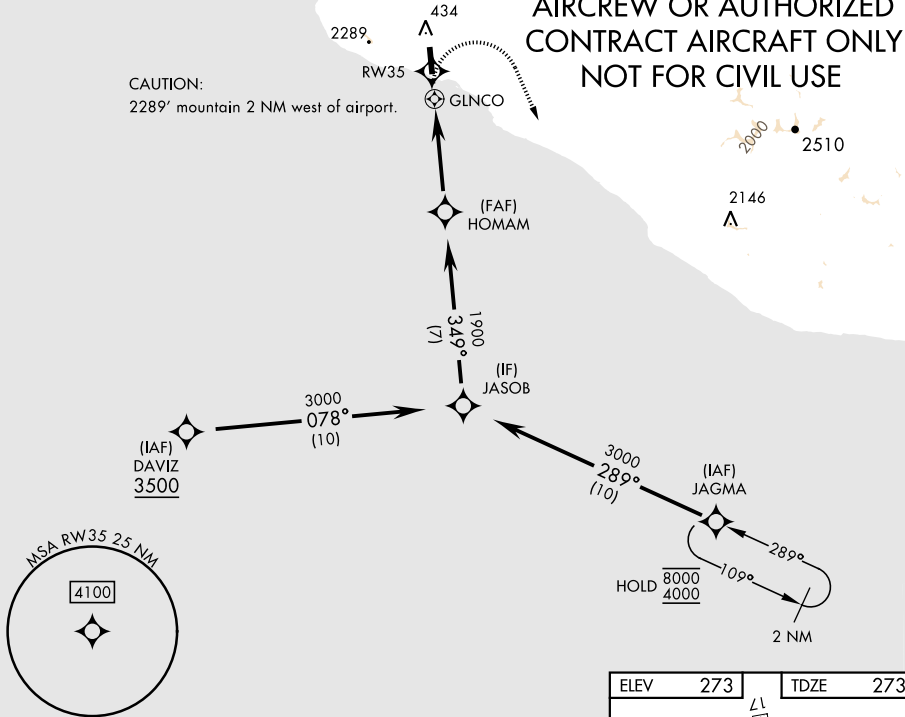
MISSED APPROACH: Climb to 1500 then climbing right turn to 4000 direct JAGMA and hold.

ANCHORAGE CENTER <b>133.3 290.4</b>	TIN CITY RCO (NOME RADIO) <b>122.6</b>	UNICOM <b>126.2</b> (CTAF)
--	---	-------------------------------

Uncontrolled airspace below 700' AGL within 7 NM of Tin City airport.

**MILITARY CERTIFIED  
AIRCREW OR AUTHORIZED  
CONTRACT AIRCRAFT ONLY  
NOT FOR CIVIL USE**

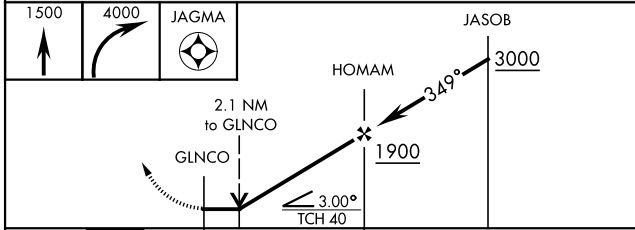
CAUTION:  
2289' mountain 2 NM west of airport.



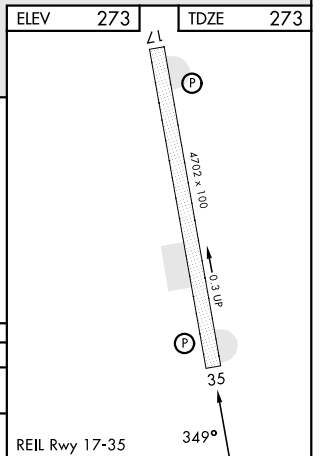
AK, 14 MAY 2026 to 09 JUL 2026

AK, 14 MAY 2026 to 09 JUL 2026

EMERG SAFE ALT 100 NM 7000



CATEGORY	A	B	C	D
LNAV MDA	1260-1¼ 987 (1000-1¼)	1260-1½ 987 (1000-1½)	1280-3 1007 (1100-3)	NA
CIRCLING*	1260-1¼ 987 (1000-1¼)	1260-1½ 987 (1000-1½)	1280-3 1007 (1100-3)	NA



# RNAV (GPS) RWY 35