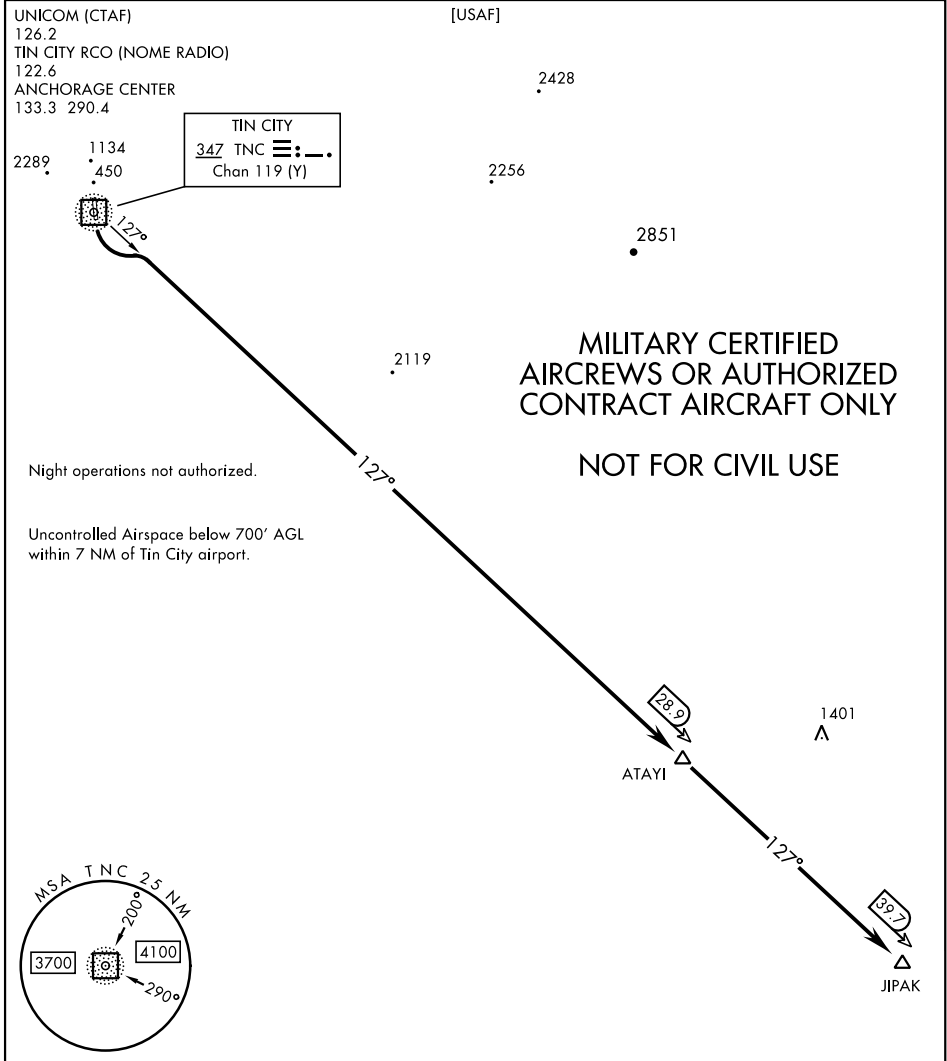


TIN CITY FIVE RWY 17 DEPARTURE (TNC5.JIPAK)

TIN CITY LRRS (PATC)
TIN CITY, ALASKA



AK, 14 MAY 2026 to 09 JUL 2026

AK, 14 MAY 2026 to 09 JUL 2026

DEPARTURE ROUTE DESCRIPTION

TAKEOFF RWY 17: Climbing left turn to 7000, intercept TNC 127° bearing to ATAYI, then direct JIPAK.

TAKEOFF RWY 35: Not Authorized

TIN CITY FIVE RWY 17 DEPARTURE (TNC5.JIPAK)

Orig 26DEC24

TIN CITY, ALASKA
TIN CITY LRRS (PATC)