

RNAV (GPS) RWY 25

-(USAF)

INDIAN MOUNTAIN LRRS (PAIM)

APCH CRS 247°	Rwy Idg 4100
	TDZE 1161
	Arpt Elev 1261

RNP APCH-GPS	MISSED APPROACH: Climbing left turn to 7000 direct CHAZY and hold. Continue climb in hold to 7000.
--------------	----------------------------------------------------------------------------------------------------

ANCHORAGE CENTER 124.6 352.0	CTAF 126.2	FAIRBANKS RADIO 122.6
----------------------------------------	----------------------	---------------------------------

Night operations not authorized.

Uncontrolled airspace below 700' AGL within 4 NM of Indian Mountain airport.

AWOS-3

NOT FOR CIVIL USE

▲
4313

▲
2016

RW25

▲
2002

▲
2800

▲
247° (7)

▲
247°

▲
247°

▲
247°

▲
247°

▲
247°

▲
247°

▲
247°

▲
247°

▲
247°

▲
247°

▲
247°

▲
247°

▲
247°

▲
247°

▲
247°

▲
247°

▲
247°

▲
247°

▲
247°

▲
247°

▲
247°

▲
247°

▲
247°

▲
247°

▲
247°

▲
247°

▲
247°

▲
247°

▲
247°

▲
247°

▲
247°

▲
247°

▲
247°

▲
247°

▲
247°

▲
247°

▲
247°

▲
247°

▲
247°

▲
247°

▲
247°

▲
247°

▲
247°

(IAF) FODUV
7000

4500°
157° (8)

2800°
247° (7)

4500°
337° (8)

4500°
337° (8)

4500°
337° (8)

4500°
337° (8)

4500°
337° (8)

4500°
337° (8)

4500°
337° (8)

(IF) FATUR

▲
1989

▲
1989

▲
1989

▲
1989

▲
1989

▲
1989

▲
1989

▲
1989

▲
1989

▲
1989

▲
1989

▲
1989

▲
1989

▲
1989

▲
1989

▲
1989

▲
1989

▲
1989

▲
1989

▲
1989

▲
1989

▲
1989

▲
1989

▲
1989

▲
1989

▲
1989

▲
1989

▲
1989

▲
1989

▲
1989

▲
1989

▲
1989

▲
1989

▲
1989

▲
1989

▲
1989

▲
1989

▲
1989

▲
1989

▲
1989

▲
1989

▲
1989

▲
1989

▲
1989

▲
1989

▲
1989

▲
1989

(IAF) CHAZY
7000

4500°
337° (8)

4500°
337° (8)

4500°
337° (8)

4500°
337° (8)

4500°
337° (8)

4500°
337° (8)

099°
279°

4 NM

2 NM

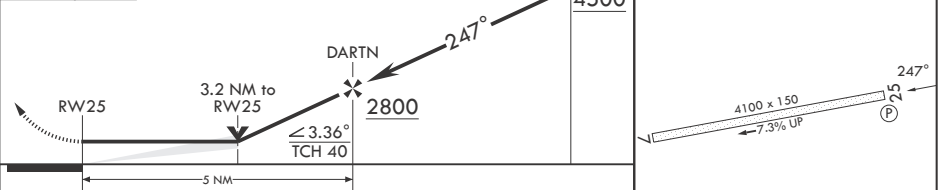
MSA RW25 25 NM

5500

MILITARY CERTIFIED AIRCREWS OR AUTHORIZED CONTRACT AIRCRAFT ONLY

EMERG SAFE ALT 100 NM 10,100

7000	CHAZY	VGSI and descent angles not coincident (VGSI angle 4.00/TCH 40).	PAPI beyond 8° right of RCL unusable.	FATUR	ELEV 1261	TDZE 1161
------	-------	------------------------------------------------------------------	---------------------------------------	-------	-----------	-----------



CATEGORY	A	B	C	D
LNAV MDA	2360-1¼ 1199 (1100-1¼)	2360-1½ 1199 (1100-1½)	NA	NA
CIRCLING	NOT AUTHORIZED			

REIL Rwy 25

AK, 14 MAY 2026 to 09 JUL 2026

AK, 14 MAY 2026 to 09 JUL 2026