

ROI NAMUR, MARSHALL I

# RNAV (GPS) RWY 22

APCH CRS	Rwy ldg	4499
219°	TDZE	14
	Arpt Elev	14

[USA]

DYESS AAF (PKRO)

RNP APCH - GFS

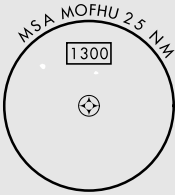
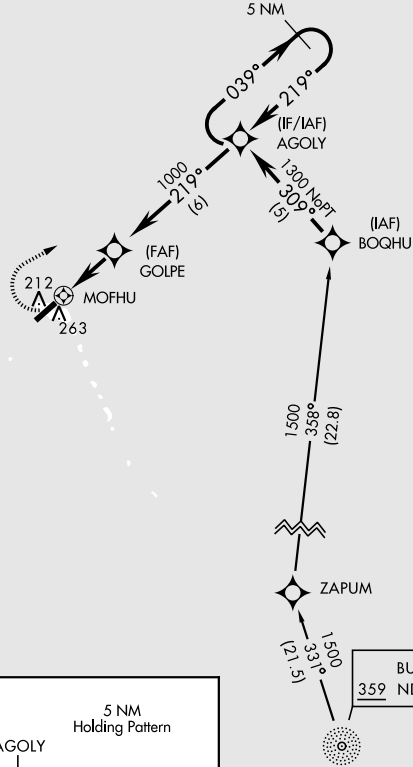
**▲ NA** \* Circling not authorized E of Rwy 04-22.

MISSED APPROACH: Climbing right turn to 1300 direct AGOLY and hold.

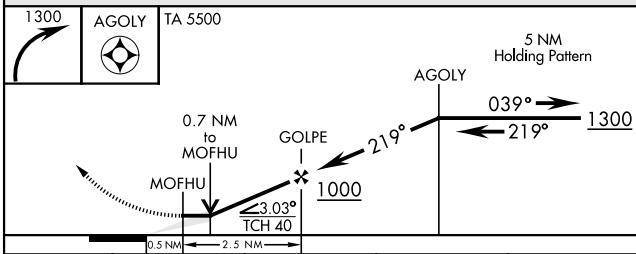
AWOS <b>119.0</b>	BUCHHOLZ TOWER * <b>126.2 360.2</b>	ROI RDO <b>118.8</b>	CTAF <b>118.1</b>
----------------------	--	-------------------------	----------------------

Procedure not authorized at night except by prior arrangement for runway lights.

Obtain local altimeter setting on CTAF. When not received, use Buchholz AAF altimeter setting. Dyess Advisory 118.1



## NOT FOR CIVIL USE



ELEV	14	TDZE	14
------	----	------	----

219°

150

117

4499 x 150

CATEGORY	A	B	C	D
RNAV MDA	580-1	566 (600-1)	580-1½ 566 (600-1½)	NOT AUTHORIZED
CIRCLING*	580-1	566 (600-1)	580-1½ 566 (600-1½)	NOT AUTHORIZED
BUCHHOLZ AAF ALTIMETER SETTING MINIMUMS				
RNAV MDA	680-1	666 (700-1)	680-1½ 666 (700-1½)	NOT AUTHORIZED
CIRCLING*	680-1	666 (700-1)	680-1½ 666 (870-1½)	NOT AUTHORIZED

ROI NAMUR, MARSHALL I

09° 24' N - 167° 28' E

DYESS AAF (PKRO)

Amdt 1 02DEC21

# RNAV (GPS) RWY 22

PAC, 14 MAY 2026 to 09 JUL 2026

PAC, 14 MAY 2026 to 09 JUL 2026