

COPTER RNAV (GPS) RWY 18

APCH CRS	Rwy Idg	2005
178°	TDZE	1091
	Arpt Elev	1091

[USA]

MULDROW AHP (KHMY)

RNP APCH - GFS

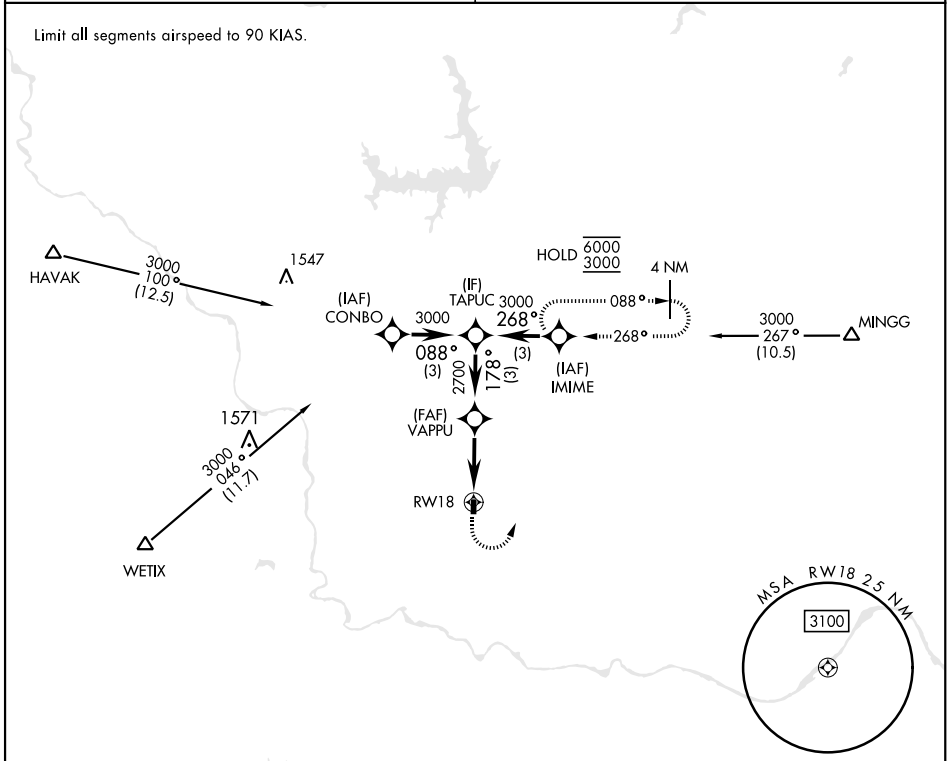
▼ Obtain local altimeter setting on CTAF; when not received, use
 ▲ NA University of Oklahoma Westheimer altimeter setting minimums.

MISSED APPROACH: Climbing left
 turn to 3000 direct IMIME and hold.

OKE CITY APP CON
124.2 336.4

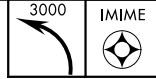
MULDROW OPS (Advisory service only)
46.9 139.425 227.2 (CTAF)

Limit all segments airspeed to 90 KIAS.

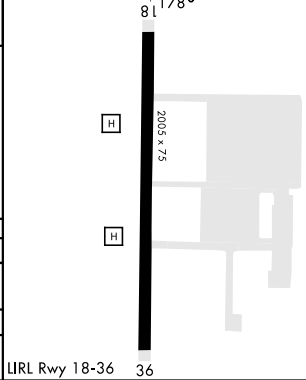
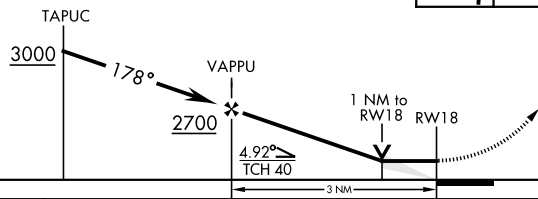


SC-1, 14 MAY 2026 to 11 JUN 2026

SC-1, 14 MAY 2026 to 11 JUN 2026



ELEV	1091	TDZE	1091
------	------	------	------



CATEGORY	COPTER		
LNAV MDA	1660-1	569	(600-1)
UNIVERSITY OF OKLAHOMA WESTHEIMER ALTIMETER SETTING MINIMUMS			
LNAV MDA	1720-1	629	(700-1)

LURL Rwy 18-36 36

COPTER RNAV (GPS) RWY 18