

COPTER RNAV (GPS) RWY 36

APCH CRS	Rwy Idg	2005
358°	TDZE	1091
	Arpt Elev	1091

[USA]

MULDROW AHP (KHMY)

RNP APCH - GFS

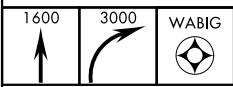
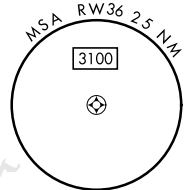
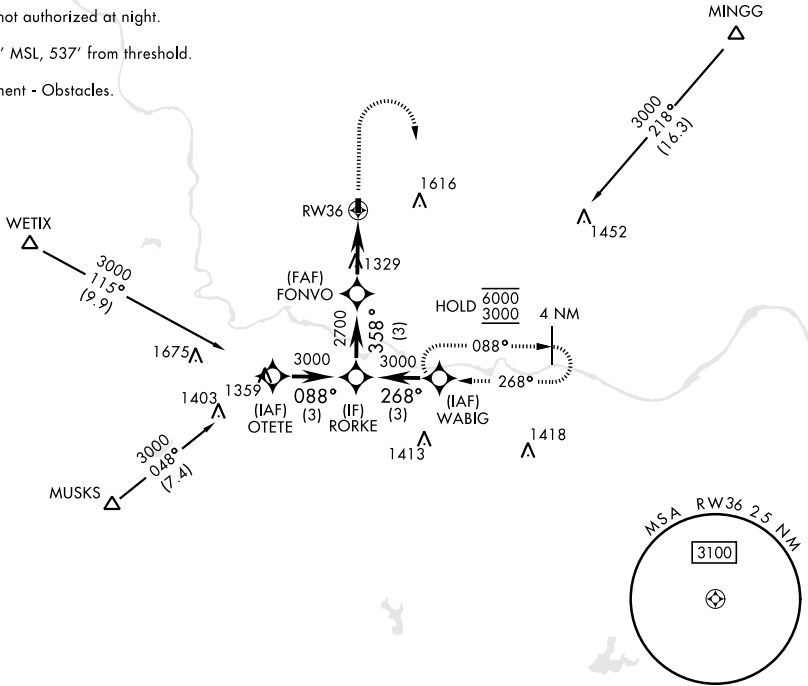
▼ Obtain local altimeter setting on CTAF; when not received, use University of Oklahoma Westheimer altimeter setting minimums.
 ▲ NA

MISSED APPROACH: Climb to 1600, then climbing right turn to 3000 direct WABIG and hold.

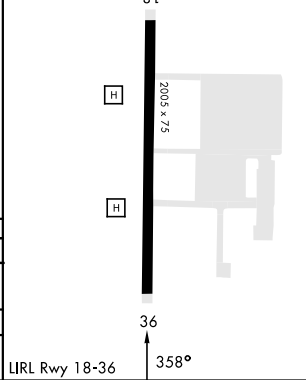
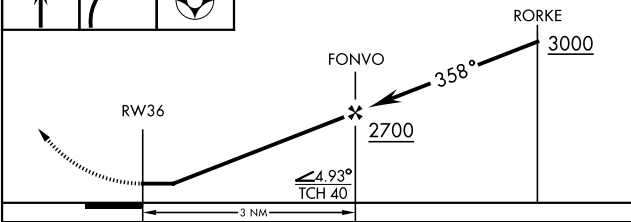
OKE CITY APP CON
124.2 336.4

MULDROW OPS (Advisory service only)
46.9 139.425 227.2 (CTAF)

Limit all segments airspeed to 90 KIAS.
 Procedure not authorized at night.
 Trees 1141' MSL, 537' from threshold.
 Visual segment - Obstacles.



ELEV	1091	81	TDZE	1091
------	------	----	------	------



CATEGORY	COPTER		
RNAV MDA	1580-1	489	(500-1)
UNIVERSITY OF OKLAHOMA WESTHEIMER ALTIMETER SETTING MINIMUMS			
RNAV MDA	1640-1	549	(600-1)

LURL Rwy 18-36 358°

COPTER RNAV (GPS) RWY 36

SC-1, 14 MAY 2026 to 11 JUN 2026

SC-1, 14 MAY 2026 to 11 JUN 2026