

NDB/DME TTK 375	APP CRS 221°	Rwy Ldg TDZE Apt Elev	6013 10 10
Chan 111 (116.4)			

NDB RWY 22

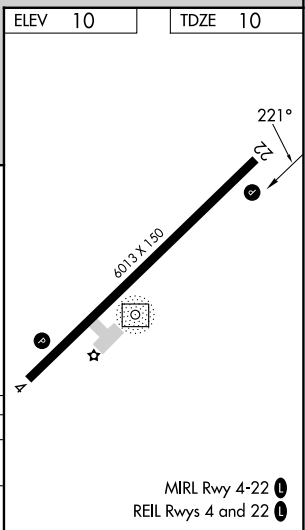
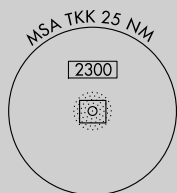
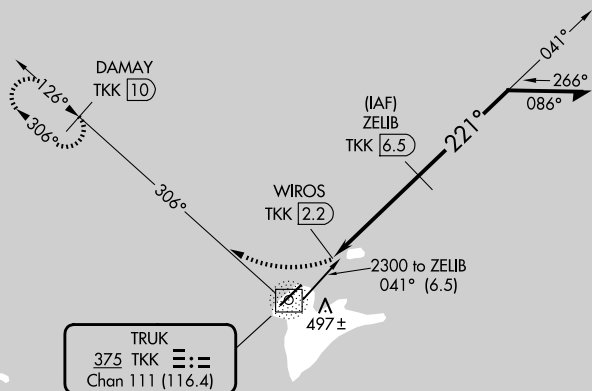
CHUUK INTL (TKK) (PTKK)

▽ Obtain local altimeter setting on CTAF; when not received, procedure NA.
▲ Circling NA southeast of Rwy 4-22. DME Required.
 No controlled airspace below 5500.

MISSED APPROACH: Climbing right turn to 2000 on BRG-306 from TTK NDB/DME to DAMAY/TKK 10 DME and hold.

TRUK RADIO
123.6 (CTAF)

DME REQUIRED



2000 TKK 306°	DAMAY TKK 10		ZELIB TKK 6.5	Remain within 10 NM
TKK NDB/DME	WIROS TKK 2.2	≤ 3.00° TCH 50	1900	2300
1.5 NM	4.3 NM			
CATEGORY	A	B	C	D
S-22	800-1¾	790 (800-1¾)	800-2½	790 (800-2½)
CIRCLING	800-1¾	790 (800-1¾)	800-2½	790 (800-2½)