

NDB/DME	TKK	Rwy Ldg	6013
375	APP CRS	TDZE	10
Chan 111 (116.4)	054°	Apt Elev	10

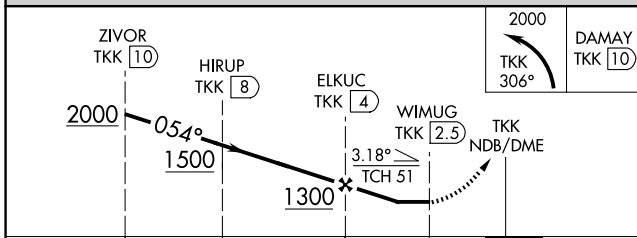
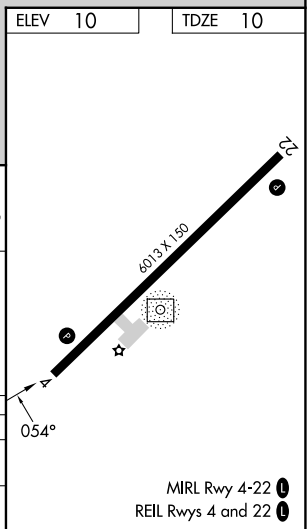
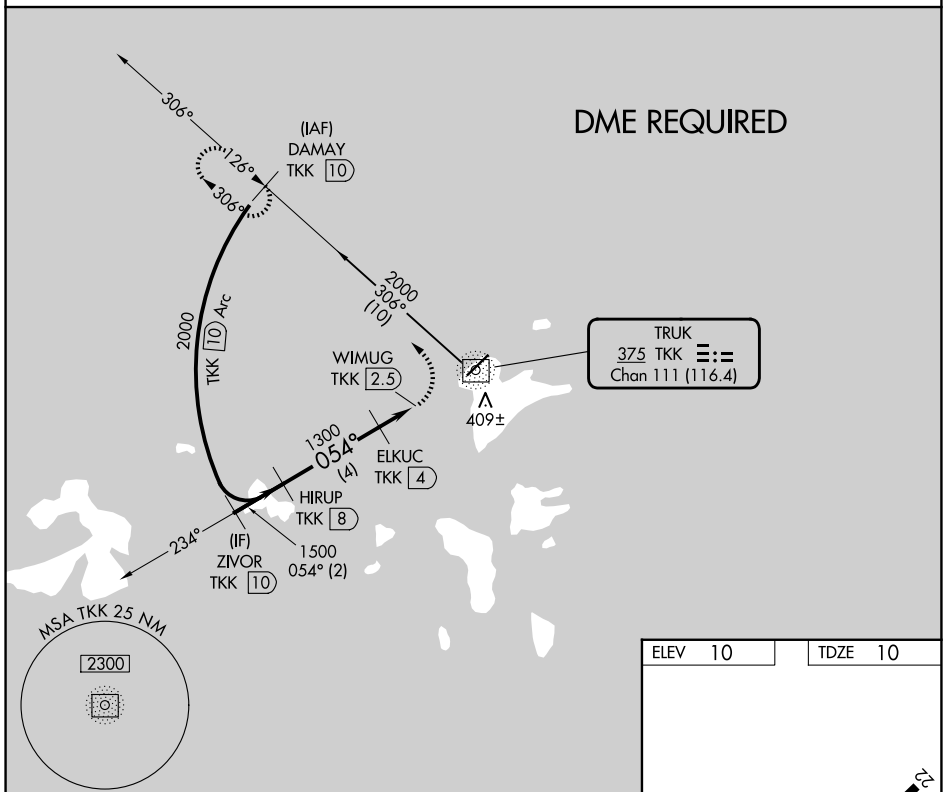
NDB RWY 4

CHUUK INTL (TKK) (PTKK)

- ▼ Obtain local altimeter setting on CTAF; when not received, procedure NA.
- ▲ Circling NA southeast of Rwy 4-22. DME required. No controlled airspace below 5500.

MISSED APPROACH: Climbing left turn to 2000 on TKK NDB/DME bearing 306° to DAMAY/TKK 10 DME and hold.

TRUK RADIO
123.6 (CTAF)



CATEGORY	A	B	C	D
S-4		720-2½	710 (800-2½)	
CIRCLING		720-2½	710 (800-2½)	

PAC: 14 MAY 2026 to 09 JUL 2026

PAC: 14 MAY 2026 to 09 JUL 2026