

APP CRS	Rwy Ldg	<b>6013</b>
<b>221°</b>	TDZE	<b>10</b>
	Apt Elev	<b>10</b>

# RNAV (GPS) RWY 22

CHUUK INTL (TKK) (PTKK)

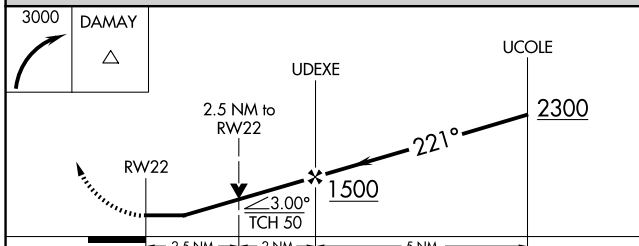
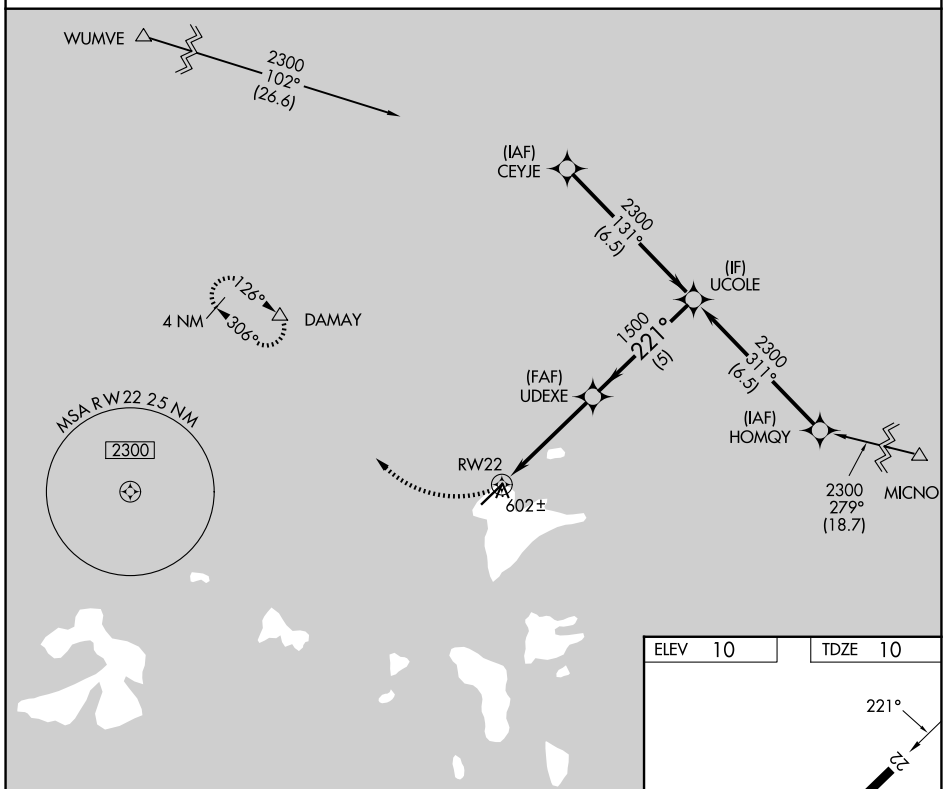
RNP APCH.

**⚠** Circling NA southeast of Rwy 4-22.

**⚠** Obtain local altimeter setting on CTAF; when not received, procedure NA. No controlled airspace below 5500.

MISSED APPROACH: Climbing right turn to 3000 direct DAMAY and hold.

TRUK RADIO  
**123.6** (CTAF)



ELEV 10	TDZE 10
---------	---------

CATEGORY	A	B	C	D
RNAV MDA	860-1 850 (900-1)	860-1¼ 850 (900-1¼)	860-2½ 850 (900-2½)	850 (900-2½)
CIRCLING	860-1¼ 850 (900-1¼)	850 (900-1¼)	860-2½ 850 (900-2½)	860-2¾ 850 (900-2¾)

MIRL Rwy 4-22 **⓪**  
REIL Rws 4 and 22 **⓪**

PAC: 14 MAY 2026 to 09 JUL 2026

PAC: 14 MAY 2026 to 09 JUL 2026