

APP CRS	Rwy Ldg	6013
041°	TDZE	10
	Apt Elev	10

RNAV (GPS) RWY 4

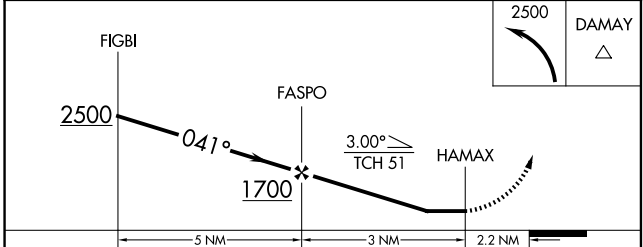
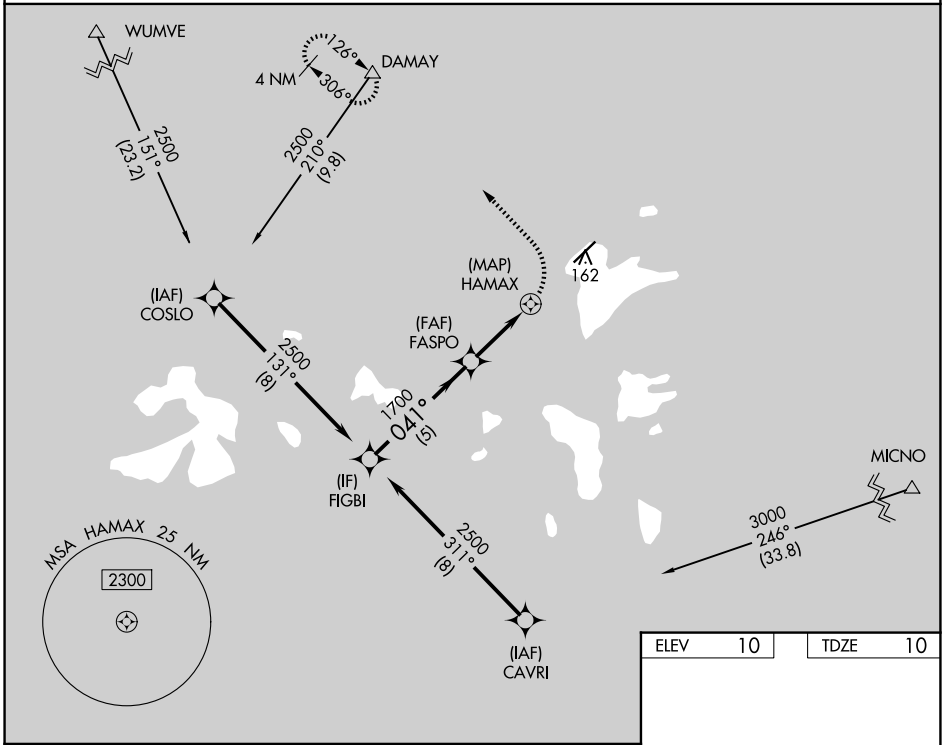
CHUUK INTL (TKK) (PTKK)

RNP APCH.

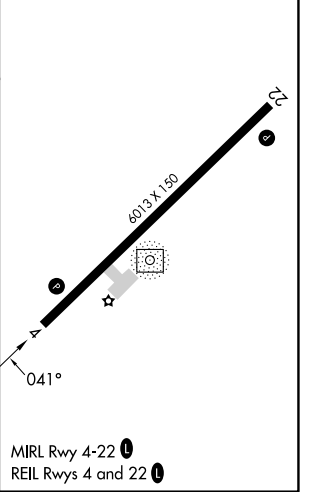
▼ Obtain local altimeter setting on CTAF; when not received, procedure NA.
▲ Circling NA southeast of Rwy 4-22.
 No controlled airspace below 5500.

MISSED APPROACH: Climbing left turn to 2500 direct DAMAY and hold.
 * Missed approach requires minimum climb of 375 feet per NM to 960.

TRUK RADIO
123.6 0 (CTAF)



ELEV	10	TDZE	10
------	----	------	----



CATEGORY	A	B	C	D
LNAV MDA*		420-3	410 (500-3)	
LNAV MDA		620-3	610 (700-3)	
CIRCLING		620-3	610 (700-3)	

PAC: 14 MAY 2026 to 09 JUL 2026

PAC: 14 MAY 2026 to 09 JUL 2026