

NORTH, SOUTH CAROLINA

RNAV (GPS) RWY 6

APCH CRS	Rwy Idg	9003
061°	TDZE	281
	Arprt Elev	321

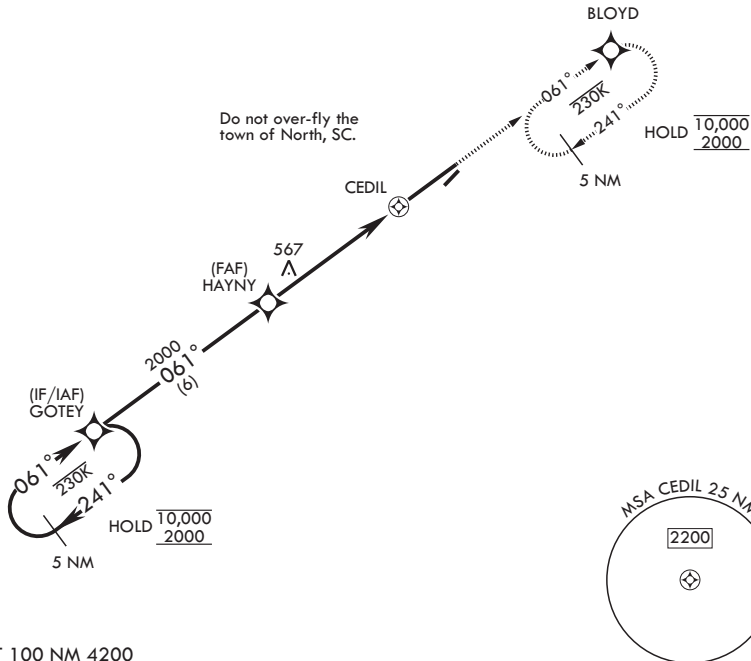
(USAF)

NORTH AF AUX (KXNO)

RNP APCH.	MISSED APPROACH: Climb to 2000 direct BLOYD and hold.
-----------	---

ASOS 118.525	COLUMBIA APP CON/DEP CON 124.15 338.2	LZ/DZ OPS FAC 120.475 235.775
------------------------	---	---

CAUTION: Uncontrolled airspace below 700 ft AGL.



EMERG SAFE ALT 100 NM 4200

<p>5 NM Holding Pattern</p> <p>GOTEY</p> <p>10,000 ← 241°</p> <p>2000 ← 061°</p>		<p>HAYNY</p> <p>2000</p> <p>3.16° ≥ TCH 50</p>		<p>1 NM to CEDIL</p> <p>CEDIL</p> <p>4.5 NM</p> <p>0.5</p>		<p>2000 BLOYD</p> <p>ELEV 321</p> <p>See Supp for declared dist.</p> <p>TDZE 281</p>
CATEGORY	A	B	C	D	E	
LNAV MDA	880-1	599 (600-1)	880-1 ³ / ₄	599 (600-1 ³ / ₄)		
CIRCLING*	940-1	619 (700-1)	940-1 ³ / ₄	619 (700-1 ³ / ₄)	1400-3 1079 (1100-3)	

NORTH, SOUTH CAROLINA
Amdt 3 29DEC22

33°37'N - 81°05'W

NORTH AF AUX (KXNO)

RNAV (GPS) RWY 6

SE-2, 14 MAY 2026 to 11 JUN 2026

SE-2, 14 MAY 2026 to 11 JUN 2026