

TONOPAH, NEVADA

ILS or LOC/DME RWY 14

LOC I-RVP 108.3	APCH CRS 141°	Rwy Ldg THRE 12,001 5473	Arprt Elev 5550
---------------------------	-------------------------	---------------------------------------	---------------------------

AL-3188 [USAF]

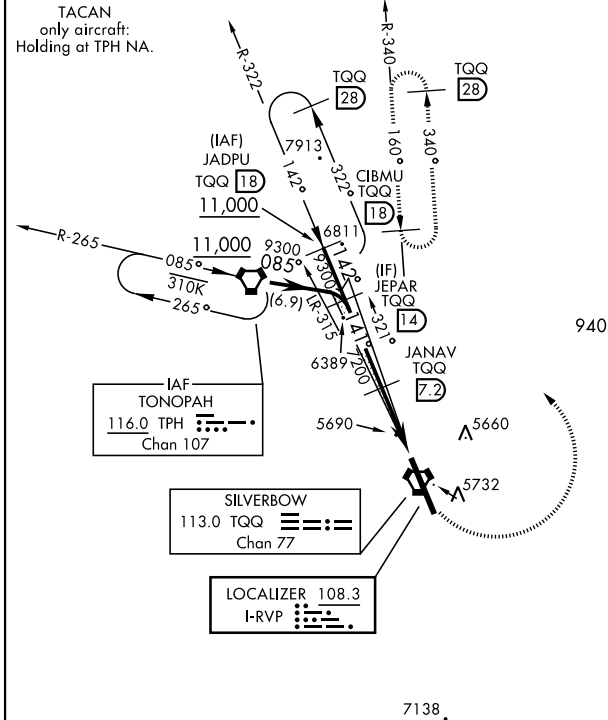
TONOPAH TEST RANGE (KTNX)

▼ *When ALS inop, increase vis to ¼ mile.
 **When ALS inop, increase CAT AB vis to 1 mile, CAT CDE to 1½ miles.
 ***Circling not authorized W of Rwy 14-32.



MISSED APPROACH: Turn left climbing to 11,000 via TQQ R-340 to CIBMU and hold, continue climb-in-hold to 11,000.

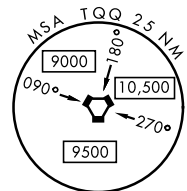
AWOS 113.0	NELLIS CONTROL 119.35 254.4	SILVERBOW TOWER* 124.75 257.95	GND CON 127.25 335.5
----------------------	---------------------------------------	------------------------------------------	--------------------------------



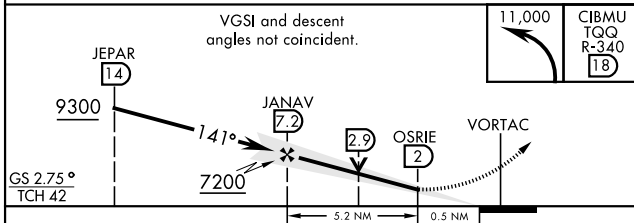
CAUTION: High terrain 3 NM W of Rwy. Unlit terrain 5558' MSL, 200' prior to Rwy 32 threshold, 200' left of centerline.

When VGSI inop, procedure NA at night. USAF ONLY: When Rwy 14 VGSI inop, straight-in Rwy 14 authorized at night with MAJCOM A3 approval. CAUTION: When Rwy 32 VGSI inop, circling to Rwy 32 NA at night.

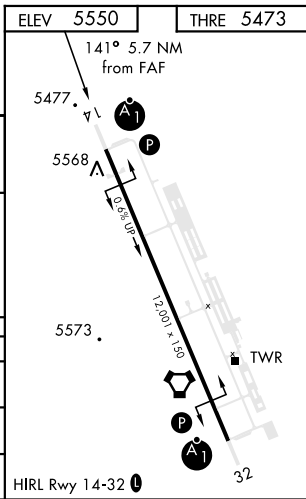
ILS Rwy 14; ILS procedure NA for Height Group 4 aircraft due to low TCH.



EMERG SAFE ALT 100 NM 16,600



CATEGORY	A	B	C	D	E
S-ILS 14*	5673 - 1/2		200	(200-1/2)	
S-LOC 14**	5960-1/2 487 (500-1/2)		5960-1	487	(500-1)
CIRCLING***	6040-1 490 (500-1)		6040-1 1/2 490 (500-1 1/2)	6100-2 550 (600-2)	



TONOPAH, NEVADA
Amdt 3 09JAN14

37°47'N - 116°47'W

TONOPAH TEST RANGE (KTNX)

ILS or LOC/DME RWY 14

SW-4, 14 MAY 2026 to 11 JUN 2026

SW-4, 14 MAY 2026 to 11 JUN 2026