

VOR/DME Z RWY 32

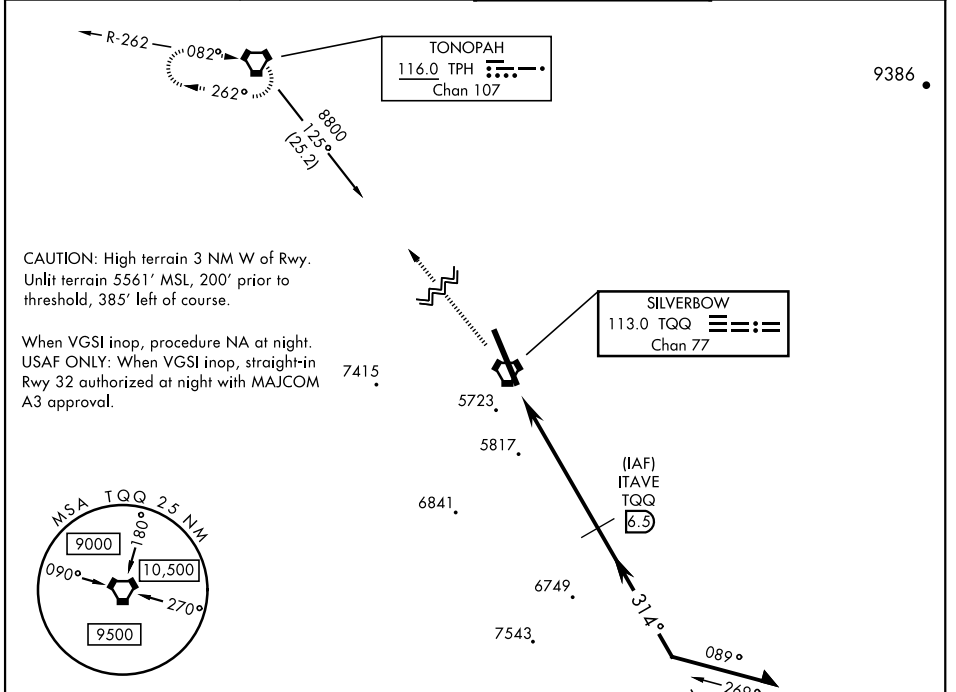
VORTAC TQQ 113.0 Chan 77	APCH CRS 314°	Rwy Idg THRE: 12,001 5550 Arpt Elev 5550
--	-------------------------	---

AL-3188 [USAF]

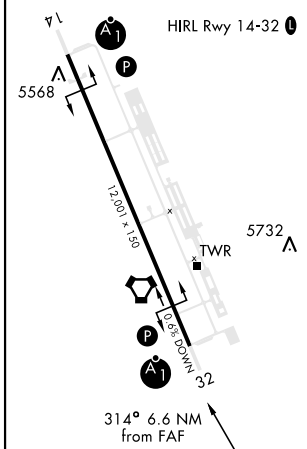
TONOPAH TEST RANGE (KTNX)

<p>V *Circling not authorized W of Rwy 14-32.</p>	<p>ALSIF-1</p>	<p>MISSED APPROACH: Climb to 11,000 direct to TPH VORTAC and hold. Continue climb in holding to 11,000.</p>
--	----------------	---

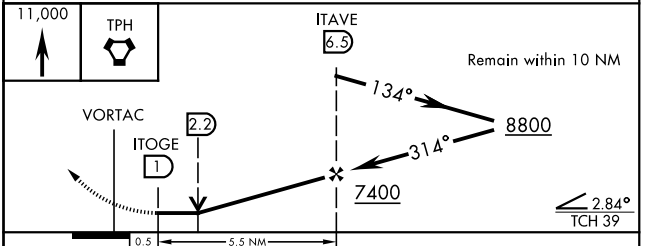
<p>AWOS 113.0</p>	<p>NELLIS CONTROL 119.35 254.4</p>	<p>SILVERBOW TOWER * 124.75 257.95 0</p>	<p>GND CON 127.25 335.5</p>
------------------------------	---	---	--



ELEV 5550	THRE 5550
-----------	-----------



EMERG SAFE ALT 100 NM 16,600 FROM TQQ



CATEGORY	A	B	C	D	E
S-32	6080/24 530 (600-1/2)		6080/55 530 (600-1)	NOT AUTHORIZED	
C CIRCLING*	6080-1 530 (600-1)		6080-1 1/2 530 (600-1 1/2)	NOT AUTHORIZED	

VOR/DME Z RWY 32

SW-4, 14 MAY 2026 to 11 JUN 2026

SW-4, 14 MAY 2026 to 11 JUN 2026