


WAAS CH <b>42707</b> <b>W01A</b>	APP CRS <b>012°</b>	Rwy Ldg <b>6400</b> TDZE <b>127</b> Apt Elev <b>129</b>
--	------------------------	---

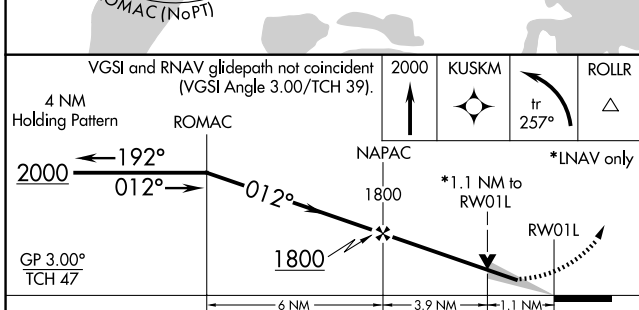
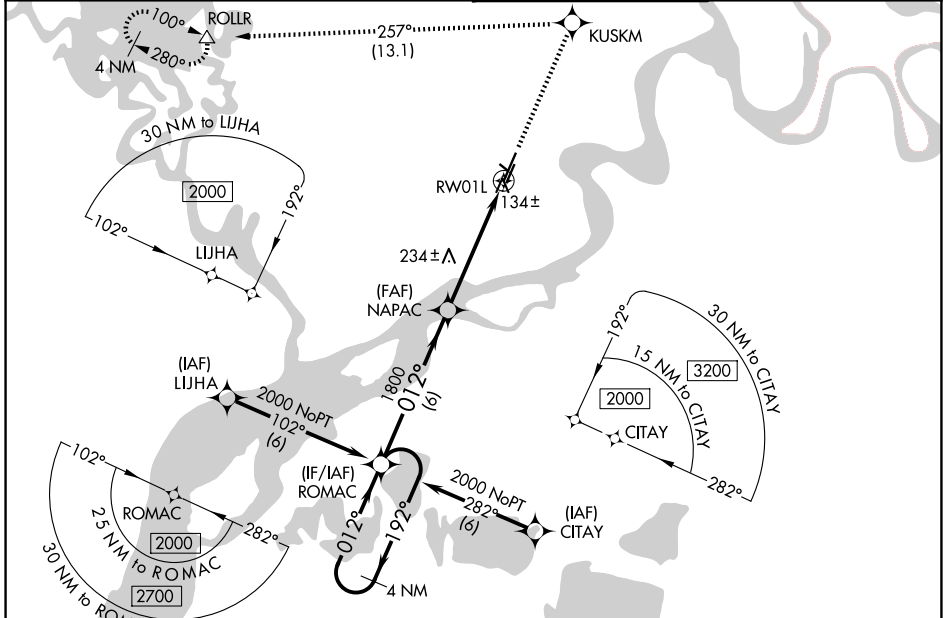
# RNAV (GPS) RWY 1L

BETHEL (BET)(PABE)

**▽** For uncompensated Baro-VNAV systems, LNAV/VNAV NA below -25°C (-13°F) or above 54°C (130°F).  
Circling NA west of Rwy 1L-19R. DME/DME RNP-0.3 NA.  
For inop ALS, increase LNAV Cat C/D visibility to RVR 6000.

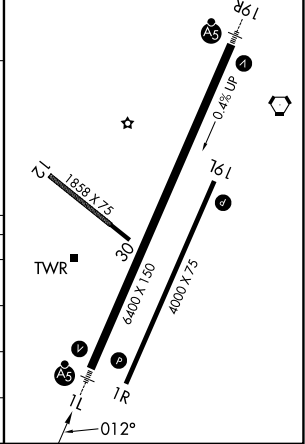
**MALSR**  
  
MISSED APPROACH: Climb to 2000 direct KUSKM and left turn on track 257° to ROLLR and hold.

ATIS <b>119.8</b>	ANCHORAGE CENTER <b>125.2 372.0</b>	BETHEL TOWER ★ <b>118.7 (CTAF) 0</b>	GND CON <b>121.7</b>
----------------------	--	---	-------------------------



ELEV 129	<b>D</b> TDZE 127
----------	-------------------

HIRL Rws 1L-19R, 1R-19L and 12-30  
REIL Rws 1R and 19L



CATEGORY	A	B	C	D
LPV DA		377/24	250 (300-½)	
LNAV/VNAV DA		555/50	428 (500-1)	
LNAV MDA	500/24	373 (400-½)	500/50	373 (400-1)
CIRCLING	500-1 371 (400-1)	600-1 471 (500-1)	600-1½ 471 (500-1½)	680-2 551 (600-2)