

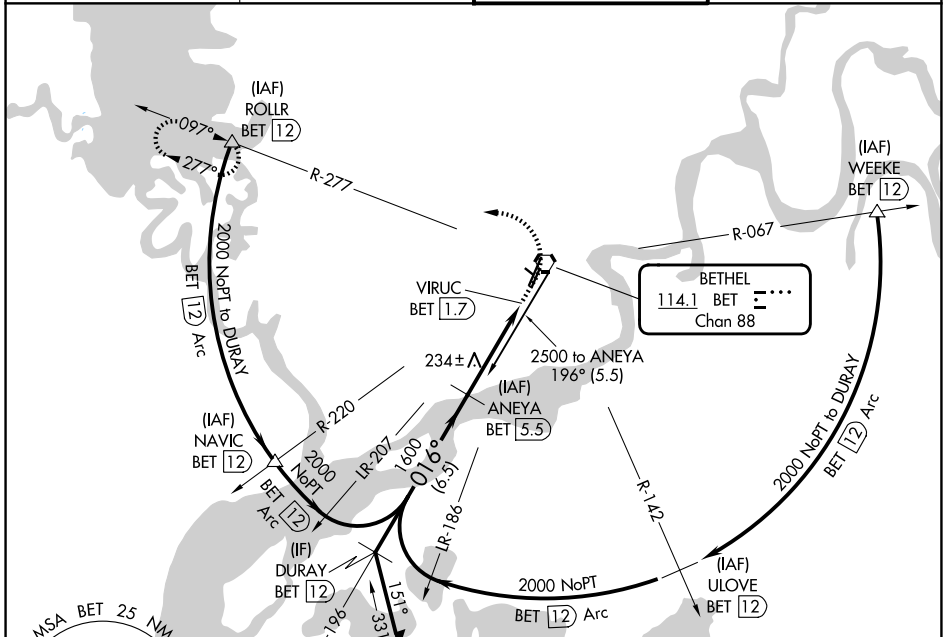
VORTAC BET <b>114.1</b> Chan <b>88</b>	APP CRS <b>016°</b>	Rwy Ldg TDZE <b>127</b> Apt Elev <b>129</b>
--	------------------------	---

# VOR RWY 1L

BETHEL (BET)(PABE)

DME required. ▼ Circling NA west of Rwy 1L-19R. For inop ALS, increase S-1L Cat C/D visibility to RVR 5500. ▲	MALSR AS	MISSED APPROACH: Climb to 800 then climbing left turn to 2000 on BET VORTAC R-277 to ROLLR/12 DME and hold.
---	-------------	---

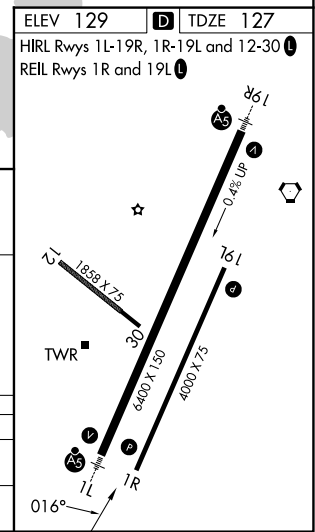
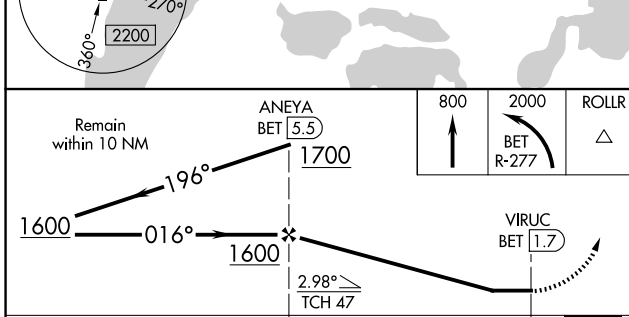
ATIS <b>119.8</b>	ANCHORAGE CENTER <b>125.2 372.0</b>	BETHEL TOWER * <b>118.7 (CTAF)</b> 0	GND CON <b>121.7</b>
----------------------	--	---	-------------------------



AK, 14 MAY 2026 to 09 JUL 2026

AK, 14 MAY 2026 to 09 JUL 2026

ELEV 129	D TDZE 127
HIRL Rwys 1L-19R, 1R-19L and 12-30	
REIL Rwys 1R and 19L	



CATEGORY	A	B	C	D
S-1L		500/50	373 (400-1)	
CIRCLING	500-1 371 (400-1)	600-1 471 (500-1)	600-1½ 471 (500-1½)	680-2 551 (600-2)