

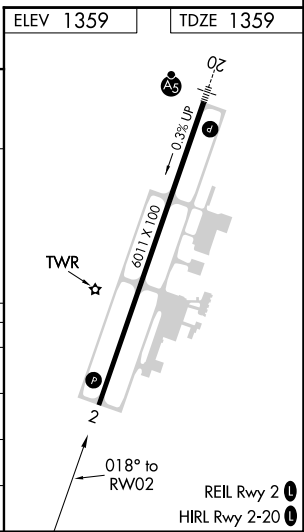
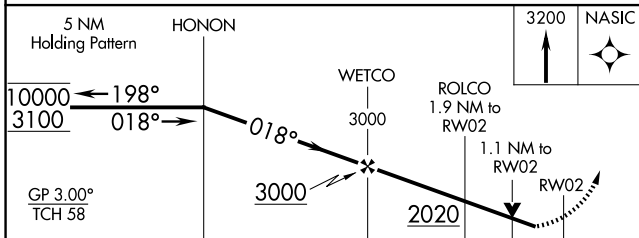
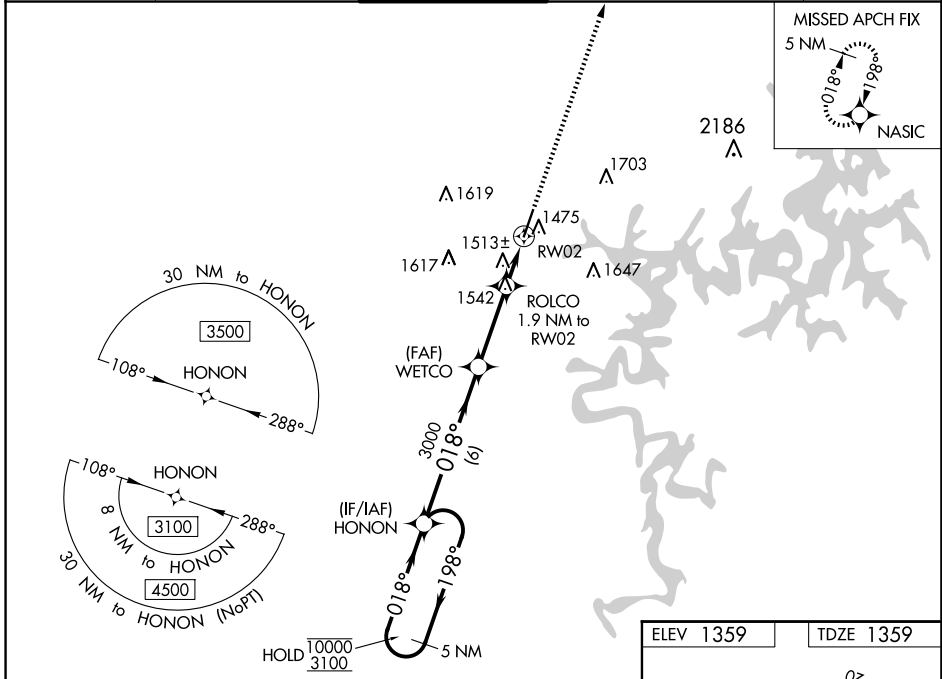
WAAS CH <b>82640</b> <b>W02A</b>	APP CRS <b>018°</b>	Rwy Idg TDZE <b>1359</b> Apt Elev <b>1359</b>	<b>6011</b>
--	------------------------	---	-------------

# RNAV (GPS) RWY 2

ROGERS EXEC - CARTER FLD (ROG)

RNP APCH-GPS.		MISSED APPROACH: Climb to 3200 direct NASIC and hold.			
Rwy 2 helicopter visibility reduction below 3/4 SM NA. For uncompensated Baro-VNAV systems, LNAV/VNAV NA below -17°C or above 54°C.					

AWOS-3PT <b>134.375</b>	RAZORBACK APP CON* <b>126.6 305.2</b>	ROGERS TOWER* <b>119.375 (CTAF) 0</b>	GND CON <b>118.0</b>	CLNC DEL <b>121.75</b>	CLNC DEL <b>121.75</b> (When twr closed)
----------------------------	--	--	-------------------------	---------------------------	--



CATEGORY	A	B	C	D
LPV DA		1620-7/8	261 (300-7/8)	
LNAV/VNAV DA		1674-7/8	315 (400-7/8)	
LNAV MDA	1780-1	421 (500-1)	1780-1 1/4	421 (500-1 1/4)
CIRCLING	1840-1	481 (500-1)	2020-1 3/4 661 (700-1 3/4)	2020-2 661 (700-2)

SC-1, 14 MAY 2026 to 11 JUN 2026

SC-1, 14 MAY 2026 to 11 JUN 2026