

WAAS CH <b>40003</b> <b>W20A</b>	APP CRS <b>198°</b>	Rwy ldg <b>6011</b>
		TDZE <b>1354</b>
		Apt Elev <b>1359</b>

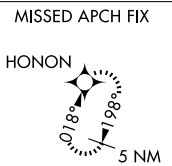
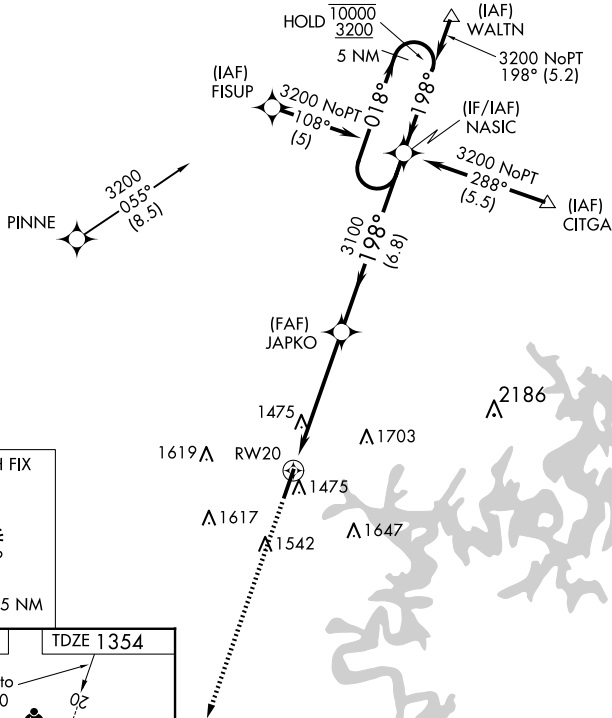
# RNAV (GPS) RWY 20

ROGERS EXEC - CARTER FLD (R.O.G)

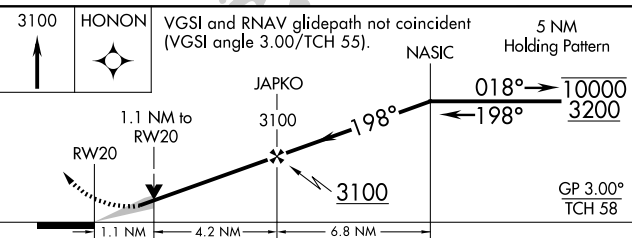
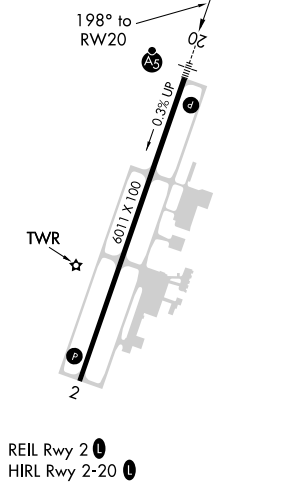
RNP APCH-GPS.		MALSR 		MISSED APPROACH: Climb to 3100 direct HONON and hold.	
For uncompensated Baro-VNAV systems, LNAV/VNAV NA below -17°C or above 54°C.					
AWOS-3PT <b>134.375</b>	RAZORBACK APP CON* <b>126.6 305.2</b>	ROGERS TOWER* <b>119.375 (CTAF)</b>	GND CON <b>118.0</b>	CLNC DEL <b>121.75</b>	CLNC DEL <b>121.75</b> <small>(When twr closed)</small>

SC-1, 14 MAY 2026 to 11 JUN 2026

SC-1, 14 MAY 2026 to 11 JUN 2026



ELEV 1359	TDZE 1354
-----------	-----------



CATEGORY	A	B	C	D
LPV DA		1604-1/2	250 (300-1/2)	
LNAV/VNAV DA		1720-5/8	366 (400-5/8)	
LNAV MDA	1740-1/2	386 (400-1/2)	1740-5/8	386 (400-5/8)
CIRCLING	1840-1	481 (500-1)	2020-1 3/4 661 (700-1 3/4)	2020-2 661 (700-2)