

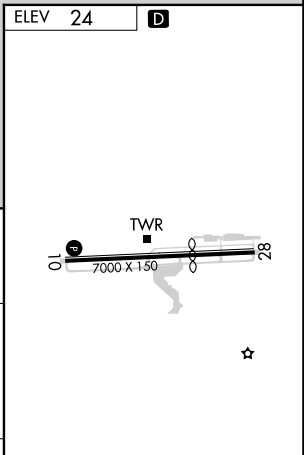
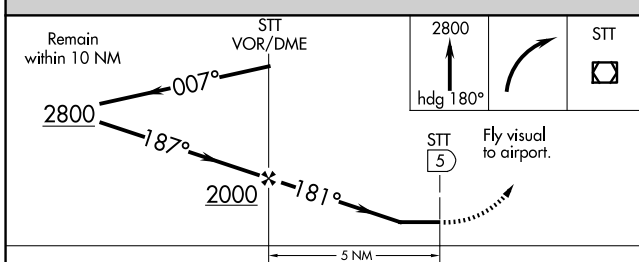
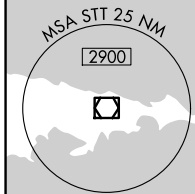
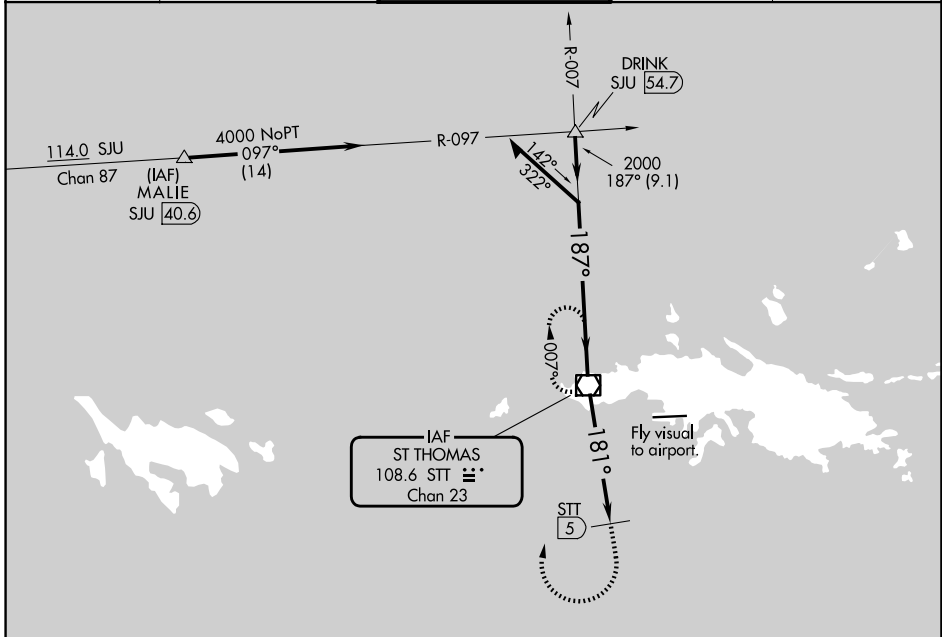
VOR/DME STT 108.6 Chan 23	APP CRS 181°	Rwy Ldg TDZE Apt Elev N/A 24
---	------------------------	---

VOR-A
CYRIL E KING (STT)(TIST)

CAUTION: High terrain north of Rwy 10-28 extended. Circling NA north of Rwy 10-28. Procedure NA when control tower not in operation. Procedure NA at night.

MISSED APPROACH: If unable to proceed visually to airport upon descent to 1160, climb to 2800 via heading 180°, then right turn direct STT VOR/DME and hold.

ATIS 124.0	SAN JUAN CENTER 128.65 279.6	ST. THOMAS TOWER * 118.8 (CTAF) 0 257.6 118.1 (NORTH OF ISLAND)	GND CON 121.9	UNICOM 122.95
----------------------	--	--	-------------------------	-------------------------



CATEGORY	A	B	C	D
CIRCLING	1160-3	1136 (1200-3)	1480-3	1456 (1500-3)

REIL Rwy 10 **0**
HIRL Rwy 10-28 **0**

SE-3, 14 MAY 2026 to 11 JUN 2026

SE-3, 14 MAY 2026 to 11 JUN 2026