

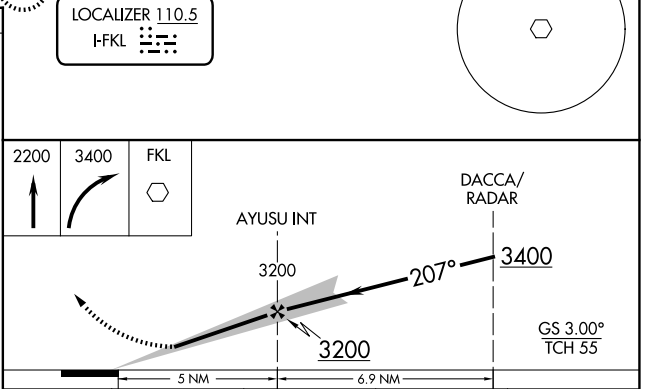
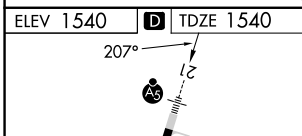
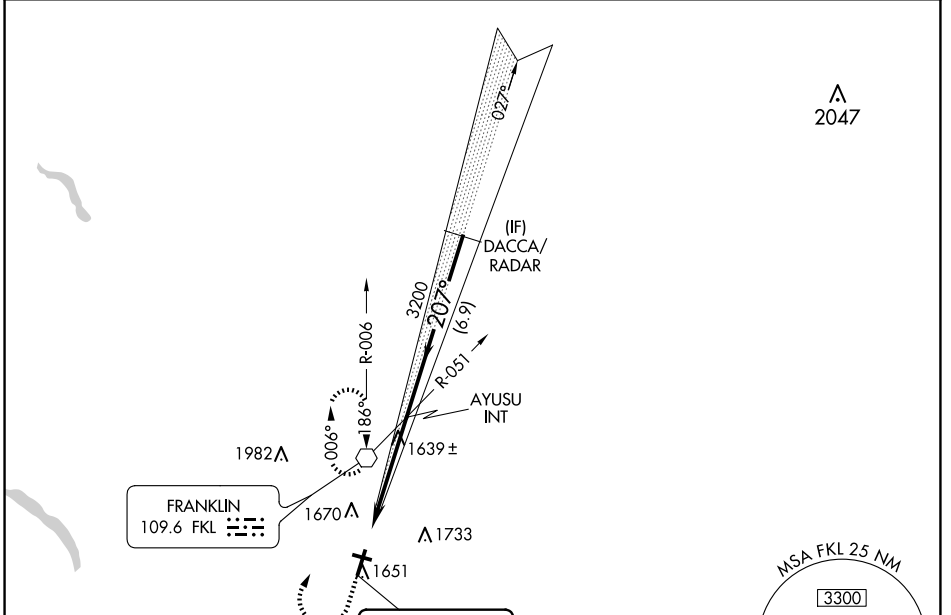
LOC I-FKL 110.5	APP CRS 207°	Rwy ldg TDZE 5200 1540 Apt Elev 1540
---------------------------	------------------------	---

ILS or LOC RWY 21

VENANGO RGNL (F'KL)

RADAR required to define DACCA. RADAR required for procedure entry.		MALSRL AS	MISSED APPROACH: Climb to 2200 then climbing right turn to 3400 direct FKL VOR and hold, continue climb-in-hold to 3400.
<p>▼ For inop ALS, increase S-LOC 21 Cat C/D visibility to 1 SM. ▲ Circling Rwy 12 NA at night.</p>			

AWOS-3PT 118.175	YOUNGSTOWN APP CON ★ 126.25 322.3	CLNC DEL 126.25	UNICOM 122.7 (CTAF) 0
----------------------------	---	---------------------------	---------------------------------



	2200	3400	FKL	
	↑	↷	⬡	
	AYUSU INT		DACCA/RADAR	
	3200		3400	
	5 NM		6.9 NM	
CATEGORY	A	B	C	D
S-ILS-21	1740-½ 200 (200-½)			
S-LOC-21	1900-½ 360 (400-½)		1900-⅝ 360 (400-⅝)	
CIRCLING	1960-1 420 (500-1)	2000-1 460 (500-1)	2040-1½ 500 (500-1½)	2100-2 560 (600-2)

FAF to MAP 5 NM

Knots	60	90	120	150	180
Min:Sec	5:00	3:20	2:30	2:00	1:40

NE-4, 14 MAY 2026 to 11 JUN 2026

NE-4, 14 MAY 2026 to 11 JUN 2026