

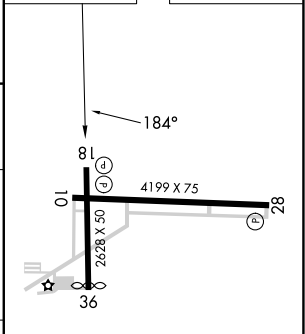
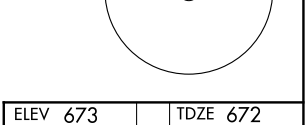
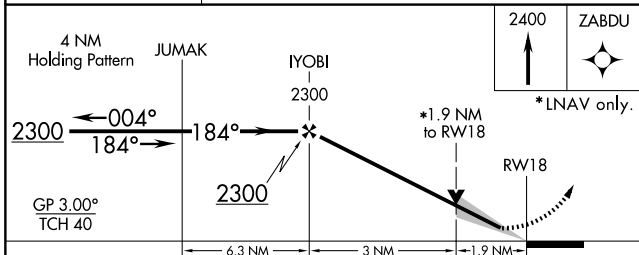
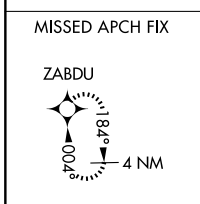
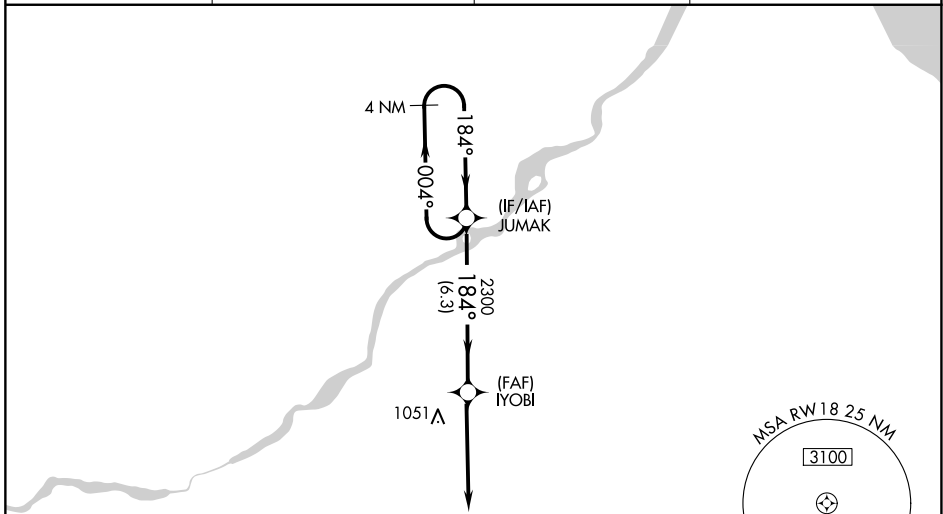
WAAS CH 97403 W18A	APP CRS 184°	Rwy Ldg 2628 TDZE 672 Aprt Elev 673
--	------------------------	--

RNAV (GPS) RWY 18

WOOD COUNTY RGNL (1G^(H))

RNP APCH.	<p>▼ Circling Rwy 36 NA at night. VDP NA when using Toledo Express altimeter setting. When local altimeter setting not received, use Toledo Express altimeter setting and increase DA to 957 feet; increase all MDAs 40 feet.</p> <p>▲ NA</p>	MISSED APPROACH: Climb to 2400 direct ZABDU and hold.
-----------	---	---

AWOS-3 120.725	TOLEDO APP CON 126.1 317.55	CLNC DEL 125.6	UNICOM 122.975 (CTAF) 0
--------------------------	---------------------------------------	--------------------------	--



CATEGORY	A	B	C	D
LPV DA	922-1	250 (300-1)		NA
LNAV MDA	1320-1	648 (700-1)		NA
CIRCLING	1320-1	647 (700-1)		NA

REL Rwy 10, 18 and 28 **0**
MIRL Rwy 10-28 and 18-36 **0**

EC-2, 14 MAY 2026 to 11 JUN 2026

EC-2, 14 MAY 2026 to 11 JUN 2026