

LOC I-AVA 111.3	APCH CRS 177°	Rwy Idg 12,351
		TDZE 900
		Arprt Elev 911

[USAF]

GRAND FORKS AFB (KRDR)

RADAR or DME required

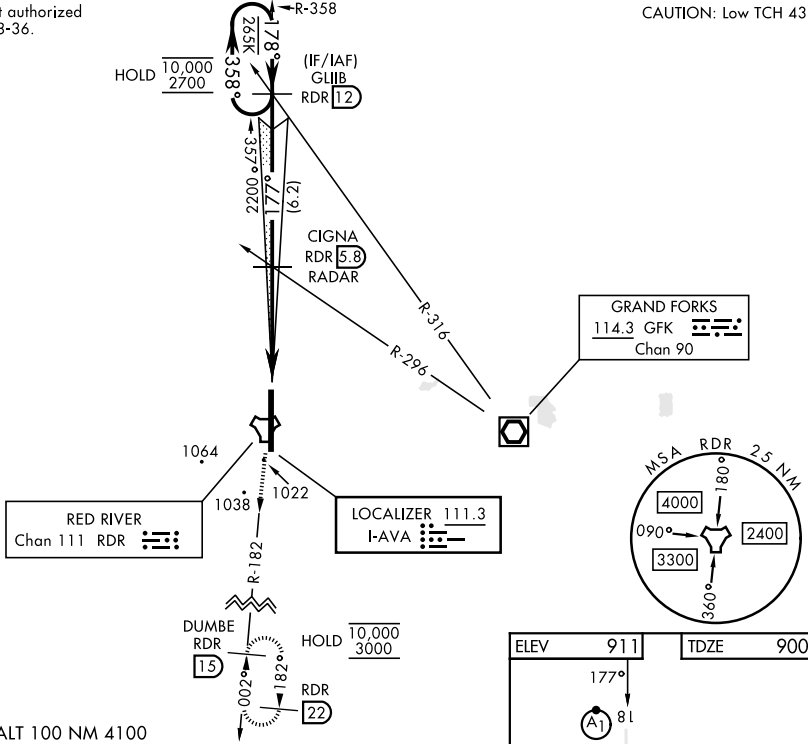
* When ALS inop, increase RVR to 40 and vis to ¾ mile.
 ** When ALS inop, increase CAT AB RVR to 55 and vis to 1 mile; CAT CDE vis to 1¼ miles.

ALSF-1

MISSED APPROACH: Climb to 3000 on RDR TACAN R-182 to DUMBE and hold.

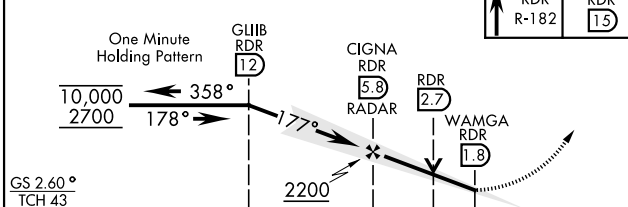
ATIS 273.45	APP CON * 118.1 318.1	RED RIVER TOWER * 124.9 349.0	GND CON 119.15 275.8	CLNC DEL 119.15 360.7
-----------------------	---------------------------------	-----------------------------------------	--------------------------------	---------------------------------

*** Circling not authorized E of Rwy 18-36. CAUTION: Low TCH 43



1339
EMERG SAFE ALT 100 NM 4100

VGSI and ILS glidepath not coincident (VGSI Angle 2.60/TCH 48).



CATEGORY	A	B	C	D	E
S-ILS 18*	1100/24		200	(200-½)	
S-LOC 18**	1340/24	440 (500-½)	1340/40	440	(500-¾)
CIRCLING ***	1340-1 429 (500-1)	1380-1 469 (500-1)	1380-1½ 469 (500-1½)	1540-2 629 (700-2)	1560-2¼ 649 (700-2¼)

ELEV 911 TDZE 900

177°

12,351 x 150

3000 RDR R-182 DUMBE RDR 15

36

HIRL Rwy 18-36

FAF to MAP 4.1 NM

Knots	60	90	120	150	180
Min:Sec	4:06	2:44	2:03	1:38	1:22

NC-1, 14 MAY 2026 to 11 JUN 2026

NC-1, 14 MAY 2026 to 11 JUN 2026